

A COMPUTER CODE FOR
HIGH ALTITUDE EMP

THESIS

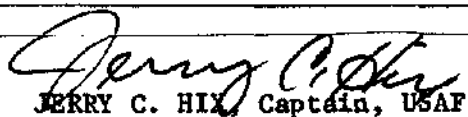
GNE/PH/74-1

Terry C. Chapman
Capt USAF

Approved for public release; distribution unlimited.

UNCLASSIFIED

SECURITY CLASSIFICATION OF THIS PAGE (When Data Entered)

REPORT DOCUMENTATION PAGE		READ INSTRUCTIONS BEFORE COMPLETING FORM
1. REPORT NUMBER GNE/PH/74-1	2. GOVT ACCESSION NO.	3. RECIPIENT'S CATALOG NUMBER AD 777841
4. TITLE (and Subtitle) A COMPUTER CODE FOR HIGH ALTITUDE EMP		5. TYPE OF REPORT & PERIOD COVERED THESIS
7. AUTHOR(s) Terry C. Chapman, Captain, USAF		6. PERFORMING ORG. REPORT NUMBER
9. PERFORMING ORGANIZATION NAME AND ADDRESS AFIT/ENP Wright-Patterson AFB, OH 45433		8. CONTRACT OR GRANT NUMBER(s)
11. CONTROLLING OFFICE NAME AND ADDRESS AFIT/ENP Wright-Patterson AFB, OH 45433		10. PROGRAM ELEMENT, PROJECT, TASK AREA & WORK UNIT NUMBERS
14. MONITORING AGENCY NAME & ADDRESS (if different from Controlling Office) Air Force Weapons Laboratory/EL Kirtland AFB, New Mexico 87117		12. REPORT DATE January 1974
		13. NUMBER OF PAGES 82
		15. SECURITY CLASS. (of this report) UNCLASSIFIED
		15a. DECLASSIFICATION/DOWNGRADING SCHEDULE
16. DISTRIBUTION STATEMENT (of this Report) Approved for public release; distribution unlimited		
17. DISTRIBUTION STATEMENT (of the abstract entered in Block 20, if different from Report) PRICES SUBJECT TO CHANGE		
18. SUPPLEMENTARY NOTES Approved for public release; IAW AFR 190-17. <div style="text-align: right;">  JERRY C. HIX, Captain, USAF Director of Information </div>		
19. KEY WORDS (Continue on reverse side if necessary and identify by block number) EMP High Altitude EMP EMP Computer Code <div style="text-align: center;"> Reproduced by NATIONAL TECHNICAL INFORMATION SERVICE U S Department of Commerce Springfield VA 22151 </div>		
20. ABSTRACT (Continue on reverse side if necessary and identify by block number) A relatively inexpensive computer code is developed to calculate the peak value of the electric field contained in an electromagnetic pulse generated by the gamma rays from a high altitude nuclear burst. The code is based on the Karzas and Latter theory for the production of Compton electrons and their interaction with the earth's magnetic field. The code can be used to calculate the peak value of the electric field at a target anywhere on or above ground level.		

DD FORM 1 JAN 73 1473

EDITION OF 1 NOV 65 IS OBSOLETE

UNCLASSIFIED

SECURITY CLASSIFICATION OF THIS PAGE (When Data Entered)

UNCLASSIFIED

SECURITY CLASSIFICATION OF THIS PAGE(When Data Entered)

20.

resulting from a nuclear burst above 60 km altitude with a gamma yield up to 60 tons. Either the direct or the ground reflected wave can be calculated. With special care, bursts up to 1 kt of gamma yield can be used.

UNCLASSIFIED

SECURITY CLASSIFICATION OF THIS PAGE(When Data Entered)

A COMPUTER CODE FOR
HIGH ALTITUDE EMP

THESIS

Presented to the Faculty of the School of Engineering
of the Air Force Institute of Technology

Air University
in Partial Fulfillment of the
Requirements for the Degree of
Master of Science

by

Terry C. Chapman, B.S.
Capt USAF
Graduate Nuclear Engineering

January 1974

Approved for public release; distribution unlimited.

ic

Preface

It is my pleasure to recognize several people who contributed in various ways to make this work possible.

I want to thank my advisor, Maj Carl T. Case. His patience and helpful suggestions were important factors to the successful conclusion of this work. In addition, I want to point out that the theoretical portion of this work is based largely on a series of lectures he gave while teaching the Electromagnetic Waves (EE 6.30) course during the summer quarter of 1973. His unusual ability to present difficult topics in a way that is easily understood by the student was the largest and most important contribution to the success of this work.

I want to thank Dr. Charles J. Bridgman for his suggestions and helpful comments made during the early stages of the work.

I want to thank Capt Frank N. Fredrickson and Lt John R. Lillis for taking the time to discuss various problems, ideas, and solutions with me.

Last, but not least, I want to gratefully acknowledge the large contribution of my wife, Karen. She offered moral support, punched computer cards, typed drafts, and in many other ways contributed to the successful conclusion of this work.

Terry C. Chapman

Contents

Preface	ii
List of Figures	iv
Abstract	v
I. Introduction	1
II. Theory	4
Overview	4
Electron Current and Densities	4
Gamma Transport	4
Electron Currents and Densities	6
Relativistic Electron Motion	9
Transformation to Spherical Coordinates	10
Electromagnetic Fields from High Altitude Currents	13
Maxwell's Equations	13
Transformation to Spherical Coordinates and Retarded Time	14
High Frequency Approximation	17
III. Code Description	20
General Approach	20
Inputs	24
Preliminary Calculations	25
Calculation of Compton Currents and Conductivity	25
Integration of Field Equations	27
Outputs	27
IV. Results of Input Parameter Variation	29
V. Discussion and Recommendations	40
Limitations	40
Uses	41
Recommendations	41
Bibliography	43
Appendix A: EMP Code User's Guide	44
Appendix B: EMP Code Flow Charts	48
Appendix C: EMP Code Listing	57
Vita	73

List of Figures

<u>Figure</u>		<u>Page</u>
1.	Geometry of the Burst.	5
2.	Descriptive Flow Chart	21
3.	Target Geometry	23
4.	Output from a Typical Run.	30
5.	Plot of $E(\tau)$ at Target from a Typical Run	31
6.	Variation in the X Direction	33
7.	Variation in the Y Direction	34
8.	Variation in the Z Direction	35
9.	Variation in Height of Burst	37
10.	Variation in Gamma Yield	39

Abstract

A relatively inexpensive computer code is developed to calculate the peak value of the electric field contained in an electromagnetic pulse generated by the gamma rays from a high altitude nuclear burst. The code is based on the Karzas and Latter theory for the production of Compton electrons and their interaction with the earth's magnetic field.

The code can be used to calculate the peak value of the electric field at a target anywhere on or above ground level, resulting from a nuclear burst above 60 km altitude with a gamma yield up to 60 tons. Either the direct or the ground reflected wave can be calculated. With special care, bursts up to 1 kt of gamma yield can be used.

A COMPUTER CODE FOR HIGH ALTITUDE EMP

I. Introduction

The effects of a nuclear environment on aerospace systems is an important factor in systems analysis. During the past few years several students have worked with Professor Bridgman at the Air Force Institute of Technology (AFIT) on a computer code to determine survivability of a system with known nuclear vulnerabilities from a variable nuclear threat. The AFIT survivability code capabilities include blast, thermal, x-ray, gamma ray, and neutron effects. The high altitude EMP code presented in this report is intended to be used in conjunction with the AFIT survivability code.

The EMP (electromagnetic pulse) from a nuclear weapon is usually considered to be a radiating electromagnetic wave of short duration containing many frequencies. However, the nuclear generated EMP was not studied seriously until a considerable time after the first nuclear explosion. At present there is a significant amount of work being done to model EMP generation and effects. For example the Air Force Weapons Laboratory (AFWL) and several civilian companies under contract to the USAF are working in the field.

There are several different types of EMP with distinctions made between the mechanisms which generate them. Kinsley (Ref 1) presents a comprehensive discussion of the various types of EMP. For example, a nuclear burst on the ground produces an EMP with different characteristics

than those from a high altitude burst. Also, nuclear burst products interacting directly with a system can produce an EMP within the system or even within the circuits of the system. This report considers only the EMP generated by high altitude burst gamma rays interacting with the atmosphere.

The high altitude EMP code developed in this report is based on the theory of Karzas and Latter (Ref 2). Briefly, the theory develops a model for the interaction of Compton electrons with the geomagnetic field. The Compton electrons are produced by prompt gamma radiation from the burst in a reasonably well defined region in the atmosphere. Several simplifications are made before arriving at the final equations.

Since several of the simplifications and assumptions used are implicit in the presentation of the theory, it is appropriate to list them here. Only one group of monoenergetic unscattered gamma rays are considered to produce Compton electrons. Each gamma which interacts is assumed to produce one and only one Compton electron initially traveling precisely in the radial direction. No angular distribution of Compton electrons is allowed. All Compton electrons are assumed to have the same energy. Curvature of the Earth's magnetic field is ignored. The electromagnetic fields are not self-consistent, that is, only the geomagnetic field is considered to affect the motion of the Compton electrons. Cascading of secondary electrons and recombination of ions is ignored. The low

frequency portion of the pulse is not considered. The Earth is assumed to be flat and the finite conductivity of ground is not considered. The burst is assumed to be far from the absorption region. Only gamma ray effects are considered.

Although the final model is somewhat restricted by these assumptions and simplifications, the end result is a relatively inexpensive computer code which gives a peak value of the electric field at any target point on or above the ground, which is an upper bound on the actual peak value.

Section II of this report develops the theory and derives the equations used in the code. Section III describes the calculational procedures used in the code. Section IV presents a sample of typical results and a study of input parameter variation. Section V is a discussion of the code's limitations and uses, with recommendations for possible improvements. Appendix A is a code user's guide. Appendix B is the detailed flow charts for the entire code. And finally Appendix C is a listing of the complete code.

II. Theory

Overview

The EMP problem is a problem in classic electromagnetic theory. A solution of Maxwell's equations is a solution of the problem. In this case it is necessary to model the current and charge densities generated by the gamma rays in the absorption region to obtain the sources and conductivity needed to solve Maxwell's equations.

Expressions for the current sources and conductivity are obtained in four steps. The transport of the gammas from the burst to the absorption region is used to obtain the number density of reacting gammas. This result is used with the models for the current and charge densities to obtain preliminary expressions. Then after considering the relativistic motion of the Compton electrons, the preliminary expressions are transformed to spherical coordinates.

After presenting Maxwell's equations in a convenient form, they are transformed to spherical coordinates and retarded time. A high frequency approximation is then made to arrive at the final equations.

Electron Current and Density

Gamma Transport. Consider the geometry shown in Fig. 1. The nuclear burst occurs at the origin at time, $t = 0$. The gamma rays move to point r' in time t' and at that point and time interact to create Compton electrons. It is assumed

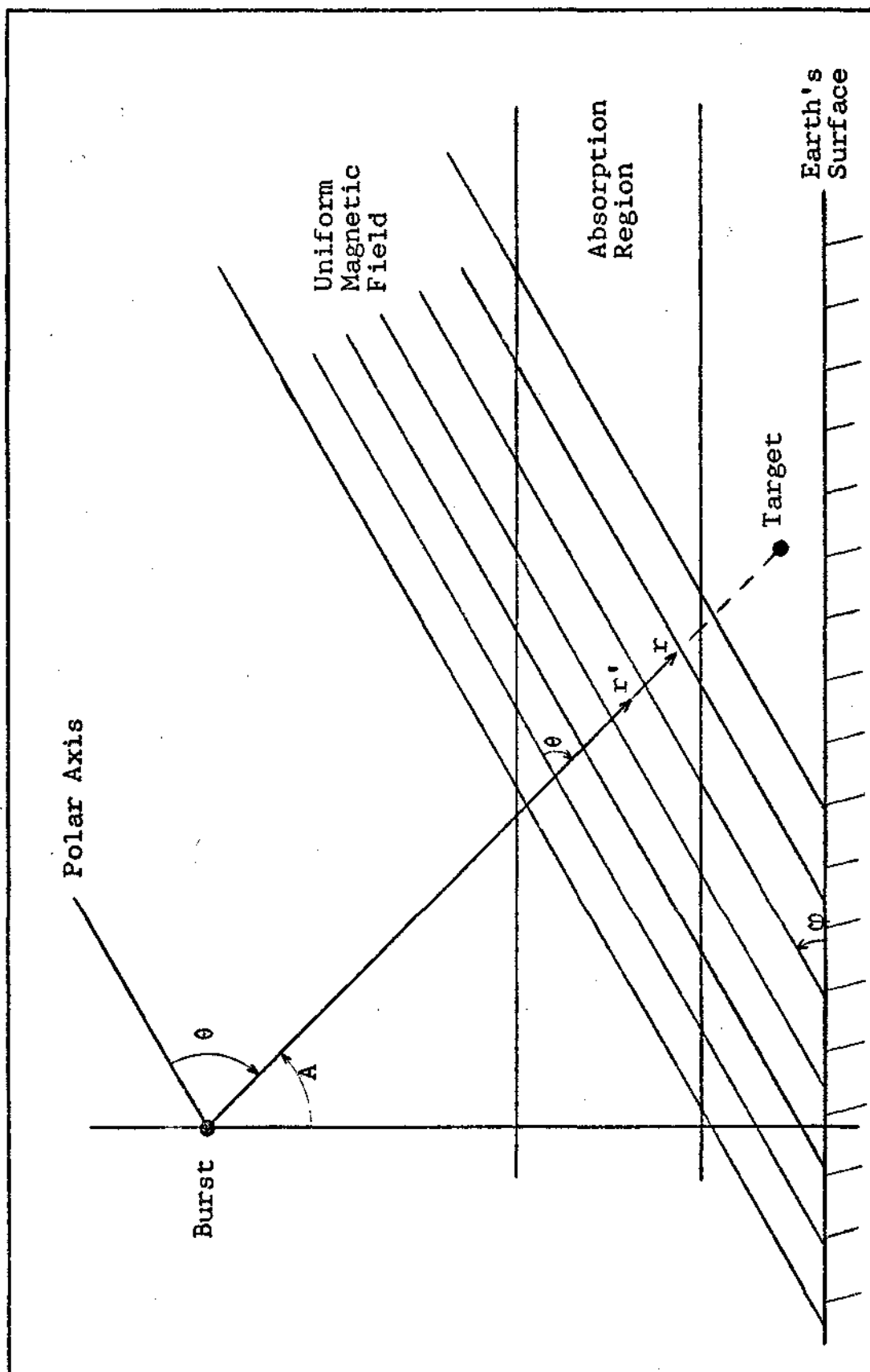


Fig. 1. Geometry of the Burst

that each gamma creates one and only one Compton electron traveling in the radial direction with the maximum Compton recoil energy.

The gamma ray emission rate can be taken as

$$\frac{dN(t)}{dt} = \frac{Y}{E} f(t) \quad (1)$$

where

$N(t)$ = number of gamma rays emitted

Y = gamma ray yield of burst

E = mean energy of the gamma rays

$f(t)$ = time dependence of the yield

and

$$\int_{-\infty}^{\infty} f(t) dt = 1 \quad (2)$$

The number density of gammas, $g(r)$, which interact at a point, r , can be taken as

$$g(r) = \frac{Y}{E} \frac{\exp \left\{ -\int_0^r \frac{dr'}{\lambda(r')} \right\}}{4\pi r^2 \lambda(r)} \quad (3)$$

where

λ = mean free path for production of Compton electrons.

Electron Currents and Densities. The rate of production of primary (Compton) electron density, n_{pri} , is

$$\frac{dn_{pri}}{dt} = g(r) f(t - r/c) \quad (4)$$

Following the Karzas-Latter approach (Ref 2) it is assumed that the electrons maintain their initial speed, V_0 , throughout their range, R , and then abruptly stop. Also, it is assumed that the secondary electrons are made at a uniform rate during the lifetime, R/V_0 , of the Compton electrons. Therefore, the rate of production of secondary electron density, n_{sec} , is

$$\frac{dn_{\text{sec}}}{dt} = \left\{ \frac{E_{\text{pri}}/33\text{ev}}{R/V_0} \right\} n_{\text{pri}} = \frac{qV_0}{R} n_{\text{pri}} \quad (5)$$

where

E_{pri} = the initial energy of the Compton electrons

R = the range of the Compton electrons in air

$q = E_{\text{pri}}/33\text{ev}$

33ev = average ionization energy per molecule for air

V_0 = the speed of the Compton electrons

R/V_0 = the lifetime of the Compton electrons

Now consider the current resulting from the Compton electrons. The differential current is the charge times the velocity times the differential density of electrons. Hence

$$d\vec{J}^c = -e\vec{V}(t-t')g(r')f(t' - r'/c)dt' \quad (6)$$

where

$\vec{V}(t-t')$ = velocity of the Compton electrons at
time t which were created at time t' .

Putting (6) into integral form gives

$$\vec{j}^c = -e \int_{t-R/V_0}^t g(r') f(t' - r'/c) \vec{V}(t-t') dt' \quad (7)$$

Now let

$$\tau' = t - t' \quad (8a)$$

$$\tau = t - (r/c) \quad (8b)$$

$$X(\tau') = X(\tau) = r - r' \quad (8c)$$

Also note that

$$(r-r') \ll r \text{ or } r' \quad (9)$$

for distant explosions (see Fig. 1). So,

$$g(r) \approx g(r') \quad (10)$$

Using Eqs (8), (9), and (10) in Eq (7) gives

$$\vec{j}^c = -eg(r) \int_0^{R/V_0} \vec{V}(\tau') f\left(\tau - \tau' + \frac{X(\tau')}{c}\right) d\tau' \quad (11)$$

Using similar arguments,

$$n_{\text{pri}} = g(r) \int_0^{R/V_0} f\left(\tau - \tau' + \frac{X(\tau')}{c}\right) d\tau' \quad (12)$$

And putting Eq (12) into Eq (5) yields

$$n_{\text{sec}} = \frac{qV_0}{R} \int_{-\infty}^{\tau} n_{\text{pri}}(\tau') d\tau'$$

$$= g(\tau) \frac{qV_0}{R} \int_{-\infty}^{\tau} \left[\int_0^{R/V_0} f\left(\tau' - \tau'' + \frac{X(\tau'')}{c}\right) d\tau'' \right] d\tau' \quad (13)$$

Relativistic Electron Motion. Equations (11), (12), and (13) contain $r(\tau)$ and $X(\tau)$ which are not yet defined in an easily obtained form. The equation of motion for a Compton electron is

$$\frac{d}{dt} (m\gamma \vec{V}) = -e\vec{V} \times \vec{B}_0 \quad (14)$$

where

m = electron rest mass

$\gamma = [1 - (V/c)^2]^{-1/2}$

\vec{B}_0 = earth's magnetic field = $B_0 \hat{U}_z$

Again it is assumed that V_0 is constant throughout the electron's lifetime.

With $\omega = eB_0/m\gamma$ Eq (14) becomes

$$\frac{d}{d\tau} \vec{V}(\tau) = -\vec{V}(\tau) \times \hat{U}_z \omega \quad (15)$$

Breaking Eq (15) into its rectangular components

$$\frac{dV_x}{d\tau} = -\omega V_y \quad (16a)$$

$$\frac{dV_y}{d\tau} = \omega V_x \quad (16b)$$

$$\frac{dV_z}{d\tau} = 0 \quad (16c)$$

A solution for this set of equations is

$$V_x = V_{\perp} \cos \omega\tau \quad (17a)$$

$$V_y = V_{\perp} \sin \omega\tau \quad (17b)$$

$$V_z = V_{\parallel} \quad (17c)$$

where V_{\perp} is the initial velocity component perpendicular to \vec{B}_0 and V_{\parallel} is the initial velocity component parallel to \vec{B}_0 and both are constants with respect to τ .

Transformation to Spherical Coordinates. It is convenient to transform the above solution to a spherical coordinate system with its origin at the burst point. The transformation from rectangular to spherical coordinates is

$$V_r = V_x \sin \theta \cos \phi + V_y \sin \theta \sin \phi + V_z \cos \theta \quad (18a)$$

$$V_{\theta} = V_x \cos \theta \cos \phi + V_y \cos \theta \sin \phi - V_z \sin \theta \quad (18b)$$

$$V_{\phi} = -V_x \sin \phi + V_y \cos \phi \quad (18c)$$

Without loss of generality the coordinates can be chosen such that \vec{V} lies in the X-Y plane, hence $\theta = 90^\circ$, and the transformation becomes

$$V_r = V_x \sin \theta + V_z \cos \theta \quad (19a)$$

$$V_\theta = V_x \cos \theta - V_z \sin \theta \quad (19b)$$

$$V_\phi = V_y \quad (19c)$$

Note that

$$V_\perp = V_0 \sin \theta \quad (20a)$$

$$V_\parallel = V_0 \cos \theta \quad (20b)$$

Putting Eqs (17) and (20) into Eq (19) gives

$$V_r = V_0 [\sin^2 \theta \cos \omega \tau + \cos^2 \theta] \quad (21a)$$

$$V_\theta = V_0 [\cos \theta \sin \theta \cos \omega \tau - \sin \theta \cos \theta] \quad (21b)$$

$$V_\phi = V_0 [\sin \theta \sin \omega \tau] \quad (21c)$$

Now $X(\tau)$ can be written as

$$X(\tau) = \int_0^\tau V_r d\tau = V_0 [\sin^2 \theta \frac{\sin \omega \tau}{\omega} + \tau \cos^2 \theta] \quad (22)$$

Equations (21) and (22) substituted into Eq (11) give

$$J_r^c = -eg(r)V_0 \int_0^{R/V_0} f(T) [\cos^2 \theta + \sin^2 \theta \cos \omega \tau'] d\tau' \quad (23)$$

$$J_\theta^c = -eg(r)V_0 \int_0^{R/V_0} f(T) [\sin \theta \cos \theta (\cos \omega \tau' - 1)] d\tau' \quad (24)$$

$$J_\phi^c = -eg(r)V_0 \int_0^{R/V_0} f(T) [\sin \theta \sin \omega \tau'] d\tau' \quad (25)$$

where

$$T = \tau - (1 - \beta \cos^2 \theta) \tau' + \beta \sin^2 \theta \frac{\sin \omega \tau'}{\omega} \quad (26a)$$

with

$$\beta = v_0/c \quad (26b)$$

Equations (23), (24), (25), and (26) provide the Compton currents within the absorption region in a form which can be used in the final field equations. In addition to the Compton currents, an expression for the conductivity within the absorption region is needed.

Equations (21) and (22) substituted into Eq (13) give

$$n_{\text{sec}}(\tau) = \frac{qV_0}{R} g(\tau) \int_{-\infty}^{\tau} \left[\int_0^{R/V_0} f(T') d\tau'' \right] d\tau' \quad (27)$$

where

$$T' = \tau' - (1 - \beta \cos^2 \theta) \tau'' + \beta \sin^2 \theta \frac{\sin \omega \tau''}{\omega} \quad (28)$$

Consider the equation of motion for secondary electrons. Neglecting the $\vec{V} \times \vec{B}_0$ term, which is small compared to the other terms (Ref 2) it is

$$m \frac{d\vec{V}}{dt} = -e\vec{E} - m\vec{V}v_c \quad (29)$$

where

v_c = electron collision frequency.

These secondary electrons have velocities in the thermal region and are assumed to reach their maximum velocity instantly. In this case, Eq (29) becomes

$$\vec{V} = \frac{-e}{mv_c} \vec{E} \quad (30)$$

The current source from the secondary electrons is

$$\vec{J}^{sec} = -e\vec{V}(\tau)n_{sec}(\tau) = \frac{n_{sec}(\tau)}{mv_c} e^2 \vec{E} \quad (31)$$

or in terms of conductivity

$$\vec{J}^{sec} = \sigma(\tau)\vec{E} \quad (32)$$

where

$$\sigma(\tau) = \frac{n_{sec}(\tau)}{mv_c} e^2 \quad (33)$$

Equations (32) and (33) provide the needed expressions for the conductivity.

Electromagnetic Fields from High Altitude Currents

Maxwell's Equations. Now that the Compton currents and the conductivity due to secondary electrons have been obtained, consider the field equations.

Maxwell's equations are

$$\vec{\nabla} \times \vec{E} = - \frac{\partial \vec{B}}{\partial t} \quad (34a)$$

$$\vec{\nabla} \times \vec{B} = \mu_0 \vec{J} + \frac{1}{c^2} \frac{\partial \vec{E}}{\partial t} \quad (34b)$$

$$\vec{\nabla} \cdot \vec{E} = \frac{q_v}{\epsilon_0} \quad (34c)$$

$$\vec{\nabla} \cdot \vec{B} = 0 \quad (34d)$$

where

\vec{J} = total current density

q_v = total charge density

Continuity of charge requires

$$\frac{\partial q_v}{\partial t} + \vec{\nabla} \cdot \vec{J} = 0 \quad (35)$$

It is convenient to combine the above equations into equations containing only \vec{E} in one and only \vec{B} in the other. Doing so gives

$$\left(\nabla^2 - \frac{1}{c^2} \frac{\partial^2}{\partial t^2} \right) \vec{E} = \mu_0 \frac{\partial \vec{J}}{\partial t} + \frac{1}{\epsilon_0} \vec{\nabla} q_v \quad (36)$$

$$\left(\nabla^2 - \frac{1}{c^2} \frac{\partial^2}{\partial t^2} \right) \vec{B} = -\mu_0 \vec{\nabla} \times \vec{J} \quad (37)$$

Transformation to Spherical Coordinates and Retarded Time. Equations (36) and (37) will now be transformed to spherical coordinates and retarded time. Consider the transformation

$$\tau = t - r/c \quad (38a)$$

$$r' = r \quad (38b)$$

$$\theta' = \theta \quad (38c)$$

$$\phi' = \phi \quad (38d)$$

This is a spherical coordinate system where time is measured at each radial point in terms of the arrival of the bomb gamma rays at that point.

Using Eq (38) it is easily shown that

$$\frac{\partial}{\partial t} = \frac{\partial}{\partial \tau} \quad (39)$$

$$\frac{\partial}{\partial r} = \frac{\partial}{\partial r'} - \frac{1}{c} \frac{\partial}{\partial \tau} \quad (40)$$

$$\frac{\partial}{\partial \theta} = \frac{\partial}{\partial \theta'} \quad (41)$$

$$\frac{\partial}{\partial \phi} = \frac{\partial}{\partial \phi'} \quad (42)$$

Thus the operator

$$\frac{\partial}{\partial t}$$

transforms to

$$\frac{\partial}{\partial \tau}$$

and the operator

$$\vec{\nabla}$$

transforms to

$$\vec{\nabla} = \hat{U}_r \frac{1}{c} \frac{\partial}{\partial \tau}$$

Similarly, the operator

$$\nabla^2 = \frac{1}{c^2} \frac{\partial^2}{\partial t^2}$$

transforms to

$$\nabla^2 = \frac{2}{c} \frac{\partial}{\partial \tau} \frac{1}{r} \frac{\partial}{\partial r} r$$

Equation (36) now becomes

$$\left[\nabla^2 - \frac{2}{c} \frac{1}{r} \frac{\partial}{\partial \tau} \frac{\partial}{\partial r} r \right] \vec{E} = \mu_0 \frac{\partial \vec{J}}{\partial \tau} + \frac{1}{\epsilon_0} \vec{\nabla} q_v - \hat{U}_r \frac{1}{c} \frac{\partial q_v}{\partial \tau} \quad (43)$$

and Eq (35) becomes

$$\frac{\partial q_v}{\partial \tau} = -\vec{\nabla} \cdot \vec{J} + \hat{U}_r \frac{1}{c} \frac{\partial}{\partial \tau} \cdot \vec{J} = -\vec{\nabla} \cdot \vec{J} + \frac{1}{c} \frac{\partial J_r}{\partial \tau} \quad (44)$$

Using Eq (44) in Eq (43) and rearranging gives

$$\begin{aligned} & -\nabla^2 \vec{E} + \hat{U}_r \frac{1}{c \epsilon_0} \vec{\nabla} \cdot \vec{J} + \frac{1}{\epsilon_0} \vec{\nabla} q_v \\ & + \frac{\partial}{\partial \tau} \left[\frac{2}{c} \frac{1}{r} \frac{\partial}{\partial \tau} (r \vec{E}) + \mu_0 (\vec{J} \cdot \hat{U}_r J_r) \right] = 0 \end{aligned} \quad (45)$$

Similarly, Eq (37) becomes

$$\begin{aligned}
 & -\nabla^2 \vec{B} + \mu_0 \vec{\nabla} \times \vec{J} + \frac{\partial}{\partial \tau} \left[\frac{2}{rc} \frac{\partial}{\partial r} (r \vec{B}) \right] \\
 & + \frac{\partial}{\partial \tau} \left[\frac{\mu_0}{c} (\hat{U}_\phi J_\phi - \hat{U}_\theta J_\theta) \right] = 0 \quad (46)
 \end{aligned}$$

High Frequency Approximation. Again, following the Karzas-Latter model, note that the variation of currents with distance is slow compared to variations with time and that the fields resulting from the transverse currents are rapidly varying in character, as are the currents themselves. Therefore, only the $\partial/\partial \tau$ terms are kept in the transverse field equations. Since the radial components do not propagate outside of the absorption region, they are not considered further in this report.

The transverse equations become

$$\frac{\partial}{\partial \tau} \left[\frac{2}{c} \frac{1}{r} \frac{\partial}{\partial r} (r E_\theta) + \mu_0 J_\theta \right] = 0 \quad (47)$$

$$\frac{\partial}{\partial \tau} \left[\frac{2}{c} \frac{1}{r} \frac{\partial}{\partial r} (r E_\phi) + \mu_0 J_\phi \right] = 0 \quad (48)$$

$$\frac{\partial}{\partial \tau} \left[\frac{2}{c} \frac{1}{r} \frac{\partial}{\partial r} (r B_\theta) - \frac{\mu_0}{c} J_\phi \right] = 0 \quad (49)$$

$$\frac{\partial}{\partial \tau} \left[\frac{2}{c} \frac{1}{r} \frac{\partial}{\partial r} (r B_\phi) + \frac{\mu_0}{c} J_\theta \right] = 0 \quad (50)$$

These equations are called the Karzas-Latter high frequency approximation for the EMP fields, and they are useful in the range $0 < \tau < 100$ shakes.

Integration with respect to time yields

$$\frac{2}{c} \frac{1}{r} \frac{\partial}{\partial r} (rE_{\theta}) + \mu_0 J_{\theta} = 0 \quad (51)$$

$$\frac{2}{c} \frac{1}{r} \frac{\partial}{\partial r} (rE_{\phi}) + \mu_0 J_{\phi} = 0$$

$$\frac{2}{c} \frac{1}{r} \frac{\partial}{\partial r} (rB_{\theta}) - \frac{\mu_0}{c} J_{\phi} = 0 \quad (53)$$

$$\frac{2}{c} \frac{1}{r} \frac{\partial}{\partial r} (rB_{\phi}) + \frac{\mu_0}{c} J_{\theta} = 0 \quad (54)$$

Recall that the total current density is

$$\vec{J} = \vec{J}^{pri} + \vec{J}^{sec} = \vec{J}^c + \sigma(\tau)\vec{E} \quad (55)$$

so Eqs (51) and (52) become

$$\frac{2}{c} \frac{1}{r} \frac{\partial}{\partial r} (rE_{\theta}) + \mu_0 J_{\theta}^c + \mu_0 \sigma(\tau) E_{\theta} = 0 \quad (56)$$

$$\frac{2}{c} \frac{1}{r} \frac{\partial}{\partial r} (rE_{\phi}) + \mu_0 J_{\phi}^c + \mu_0 \sigma(\tau) E_{\phi} = 0 \quad (57)$$

With the aid of a computer, it is now possible to obtain numerical solutions for the above equations which will yield a slightly high estimate of the peak value of the EMP pulse resulting from a high altitude burst.

Below the absorption region the Compton currents and the conductivity are zero. In this case, Eqs (56) and (57) have the following solutions:

$$E_{\theta} = C_1/r \quad (58)$$

$$E_{\phi} = C_2/r \quad (59)$$

where C_1 and C_2 are determined by the values of E_{θ} , E_{ϕ} , and r at the bottom of the absorption region.

III. Code Description

General Approach

Equations (56), (57), (58), and (59) were chosen as the simplest ones to solve numerically. Of course, Eqs (24), (25), (27), and (33) are used to obtain the Compton currents and conductivity needed to solve Eqs (56) and (57).

The B - field equations are not solved since

$$E = cB \quad (60)$$

can be used to obtain B once E is found. This relationship is based on the assumption that the EMP pulse is a spherical wave propagating in free space, below the absorption region.

The function used for the time dependence of the weapon yield is the one recommended by Pomranning (Ref 3).

$$f(\tau) = (1/N) \frac{(\alpha+\beta) \exp(\tau-\tau_0)}{\beta + \alpha \exp[(\alpha+\beta)(\tau-\tau_0)]} \quad (61)$$

where N is chosen such that

$$\int_0^{\infty} f(\tau) d\tau = 1 \quad (62)$$

and $\alpha > \beta$.

This function rises like $e^{\alpha\tau}$ for small τ , falls like $e^{-\beta\tau}$ for large τ , and has a single maximum at τ_0 .

Figure 2 presents a flow chart which is descriptive of the approach taken solving the equations. The top of the absorption region is assumed to be at 50 km altitude and the bottom of the absorption region is assumed to be

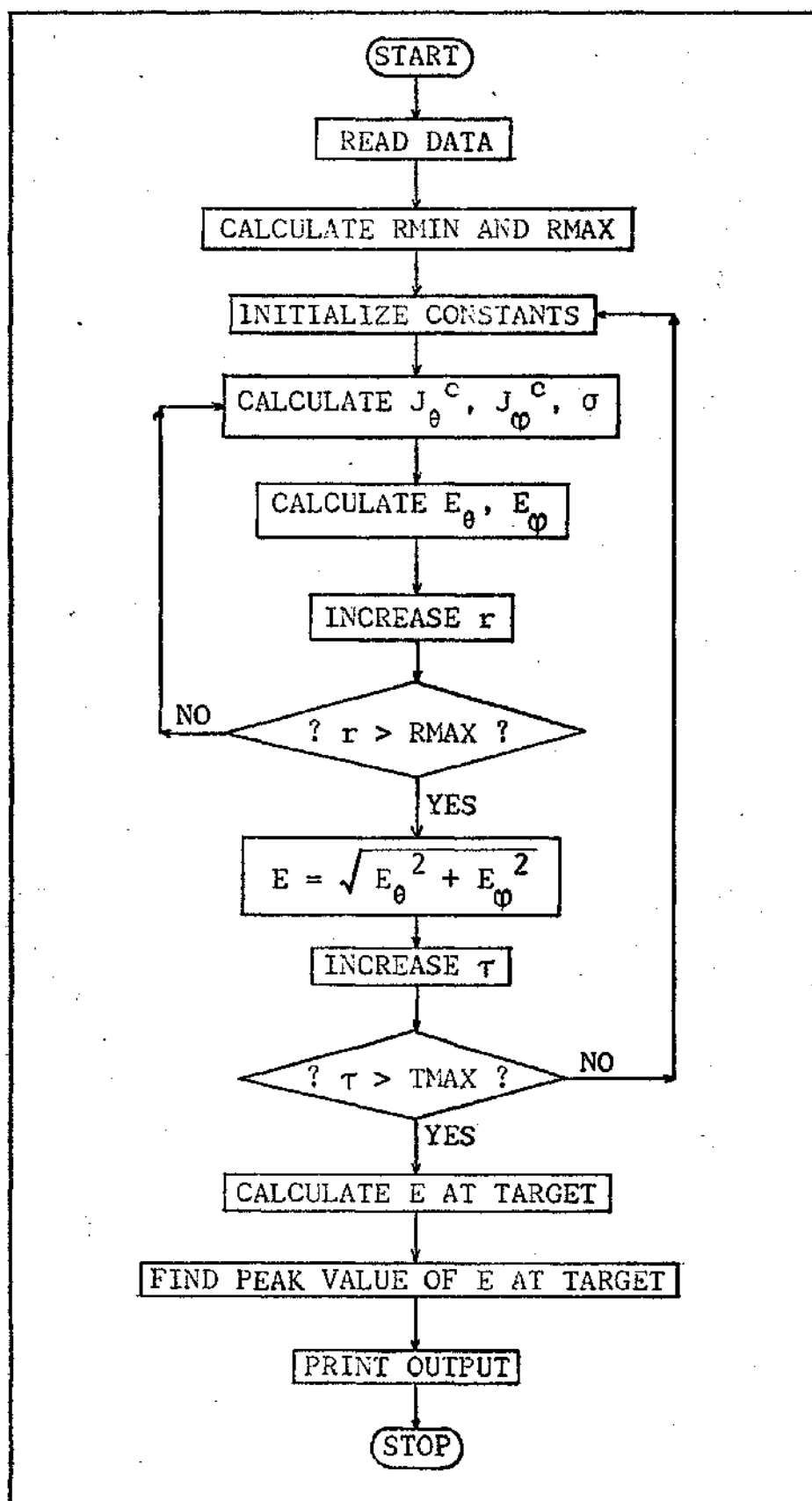


Fig. 2. Descriptive Flow Chart

at 20 km altitude. Calculations by Latter and Lelevier (Ref 4) indicate that 20 km to 50 km is the altitude where most of the prompt gamma ray energy is deposited.

Figure 3 depicts the target geometry. The value for R_{MIN} is determined by the intersection of the line of sight with the 50 km altitude. The value for R_{MAX} is determined by the intersection of the line of sight with the 20 km altitude. If the target is in the absorption region the target altitude determines R_{MAX} for the direct wave calculation. These two values of r are the limits on the mesh in the r direction. The line of sight is divided into the desired number of steps along r for the integration on r in the absorption region.

The retarded time direction of the mesh is divided into 0.1 shake steps up to 10 shakes and then 1.0 shake steps on up to 100 shakes. Calculation can be stopped at any desired T_{MAX} from 10 to 100 shakes, which is the upper limit of the usefulness of the high frequency approximation.

If the ground reflected wave is to be calculated, the mirror image of the target, below ground, is used to find the line of sight from the burst to the target. (Refer to Fig. 3.)

At $r = R_{MIN}$ all of the fields are assumed to be zero. For each τ , equations (57) and (58) are integrated over r from R_{MIN} to R_{MAX} and the value of E at the bottom of the absorption region is stored. At each step in r , equations (24), (25), and (27) are numerically integrated. Then

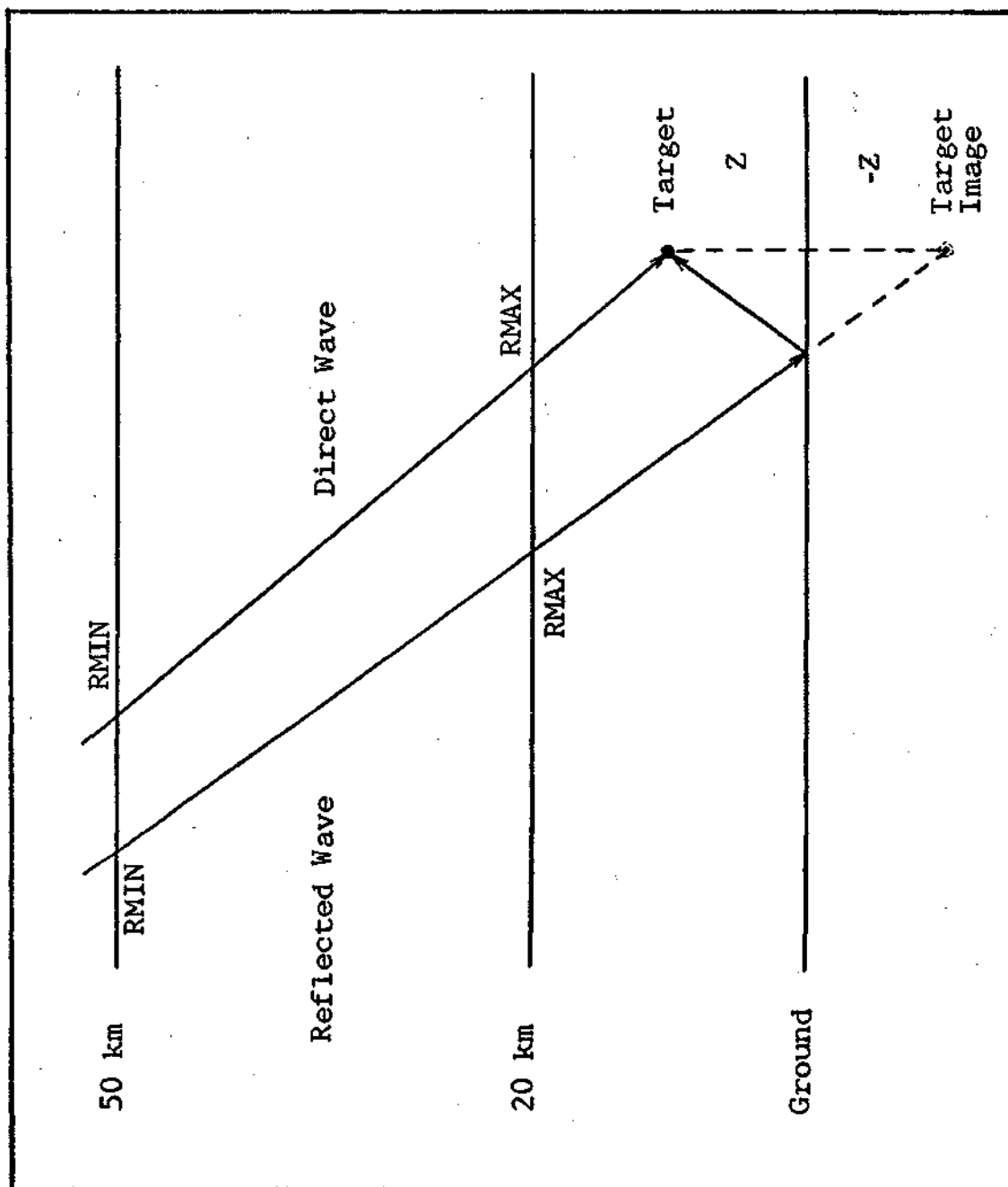


Fig. 3. Target Geometry

equations (58) and (59) are combined into

$$E = \frac{(R_{MAX})(E_{R_{MAX}})}{r_{target}} \quad (63)$$

to find E at the target.

The E array is then searched to find the peak value before printing out the results.

Inputs

The code uses a right handed Cartesian coordinate system with the ground in the X-Y plane, the \vec{B}_0 vector in the Y-Z plane, and \hat{j} pointing towards the equator. For example, in the northern hemisphere, \hat{i} is magnetic west, \hat{j} is magnetic south, and \hat{k} is altitude. The origin of the coordinate system is always at ground zero, directly below the burst. Note that this coordinate system is not the same as the Cartesian systems used earlier.

Referring to the above coordinate system the target coordinates, (X,Y,Z), are read in using units of meters. If the reflected wave is to be calculated the altitude is read in as a negative number, (X,Y,-Z).

The height of the burst is read in using units of kilometers. The gamma yield of the burst is read in using units of kilotons.

The magnitude of the Earth's magnetic field is read in using units of webers per square meter. The dip angle (ϕ in Fig. 1) of the magnetic field is read in using units of degrees.

NDELR, the desired number of steps to be used in the integration over r in the absorption region, is read in as any integer in the closed interval $[50, 500]$.

TMAX, the retarded time where calculations are to be stopped, is read in, using units of shakes, as any integer in the closed interval $[10, 100]$.

Preliminary Calculations

Before starting the numerical integrations, the code performs several preliminary calculations. The input data is converted to MKS units. The reflected wave is used whenever Z is greater than 49 km or less than 0. The target coordinates are transformed to a spherical coordinate system with the burst at the origin and the polar axis parallel to \vec{B}_0 . The line of sight intersections with the absorption region are determined. And finally, the constant angles required by the code, θ and A , (see Fig. 1) are calculated.

Calculation of Compton Currents and Conductivity

The two Compton currents, J_θ^C and J_ϕ^C are calculated at each r, τ mesh point by numerically integrating equations (24) and (25). The step size used is 0.1 times the Compton lifetime, R/V_0 . The integration itself is done using the 4th order Runge-Kutta method (Ref 5). It should be noted that both the mean free path for Compton interaction and the Compton lifetime are exponentially scaled from sea

level values using a 7 km scale height. However, the Compton lifetime is not allowed to be greater than 100 shakes, since this is the maximum time of interest.

Monoenergetic gammas of energy 1.5 Mev are assumed. The most energetic Compton electrons resulting from 1.5 Mev gammas have a speed of $2.88 (10)^8$ m/sec. Therefore $V_0 = 2.88 (10)^8$ m/sec.

Since the integration on τ' in equation (27) is also over the Compton lifetime, this integration is carried out simultaneously with the Compton current integrations. Again, the 4th order Runge-Kutta method is used. It is broken into two parts, one for $-\infty < \tau' < 0$ and the other for $0 < \tau' < \tau$. In this case, $-\infty$ is defined to be the time when the first gamma ray reached the top of the absorption region, since no secondaries can be produced before that time.

The integration on τ' in equations (27) is also broken into two parts, one for $-\infty < \tau' < 0$ and the other for $0 < \tau' < \tau$. In the first case, integration is started at $\tau' = 0$ and proceeds to $\tau' = -(r-R_{MIN})/V_0$ in steps of $\Delta\tau' = -\Delta r/V_0$. In the second case, integration is started at $\tau' = 0$ and proceeds to $\tau' = \tau$ in steps of $\Delta\tau' = \Delta\tau$. In both cases, simple step integration is used. That is

$$\int f(\tau') d\tau' = \sum_{\text{all } i} (\Delta\tau'_i) [f(\tau'_i)] \quad (64)$$

The integration over τ' is carried out parallel to the integration of (56) and (57) over τ (using space as a pseudo retarded time) and simultaneously with the increase in τ as the space integrations are repeated for each new τ .

This rather involved approach to solving equation (27) is necessary to save running time. A direct approach, with separate integrations, would at least triple or quadruple the total running time required for execution of the code.

Integration of the Field Equations

For each τ , equations (56) and (57) are integrated from $r = RMIN$ to $r = RMAX$ in steps of $\Delta r = (RMAX-RMIN)/NDEL R$ using the 4th order Runge-Kutta method. Then the magnitude of E is found from the two components and the result is stored in the E array. τ is increased by $\Delta \tau$ and the whole process is repeated until τ reaches $TMAX$.

On completion of the iterations, each member of the E array is multiplied by $RMAX/r_{target}$ (equation 62). Then the E array is searched to find the peak value.

Outputs

There are several output options available in the code. The basic output is:

1. Gamma yield and altitude of burst.
2. Target coordinates from ground zero.
3. Distance from burst to target.
4. A message indicating whether the direct or the reflected wave is being calculated.

5. The time period covered by the calculation.
6. The time when the peak value occurred.
7. The peak value of E at the target.
8. The τ and E arrays.

In addition, a linear and a log-log plot of $E(\tau)$ can be obtained. Also, a listing of the values of E at the bottom of the absorption region for each τ can be obtained. Either or both of these two options can be added to the basic output.

IV. Results and Input Parameter Variation

The output from a typical run is shown in Fig. 4.
 The $E(\tau)$ calculated during the run is shown in Fig. 5.
 The input data for this run was:

X = 0 meters (65a)

Y = 0 meters (65b)

Z = 0 meters (65c)

HOB = 100 km (65d)

Y_Y = .001 kt (65e)

B_0 = $2(10)^{-5}$ wb/m² (65f)

Dip Angle = 20° (65g)

NDEL R = 50 (65h)

TMAX = 20 shakes (65i)

The CDC 6600 Computer required 191 sec and 33000₈ words of central memory to execute this run.

The peak value of E, 6400 V/m, obtained in this run compares favorably with Karzas-Latter's order of magnitude estimate of 10^4 V/m (Ref 2) from similar input data.

In order to gain a better knowledge of the operating capabilities of the code, the effect of varying input parameters one at a time was studied. The basic set of parameters used was:

THE BURST WITH GAMMA YIELD CF 1.000E-03 KILOTCNS
IS AT AN ALTIITUDE OF 1.000E+02 KILOMETERS.

THE TARGET IS AT CCORCINATES 0. 0.
WHICH IS 1.000E+05 METERS FROM THE BURST

DIRECT WAVE IS BEING CALCULATED

ITERATION TERMINATED AFTER 20.0 SHAKES

PEAK OCCURRED AT 2.1 SHAKES

* * * * *
* PEAK EFIELD AT TARGET IS 6.448E+03 VOLTS/METER *
* * * * *

Fig. 4. Output from a Typical Run

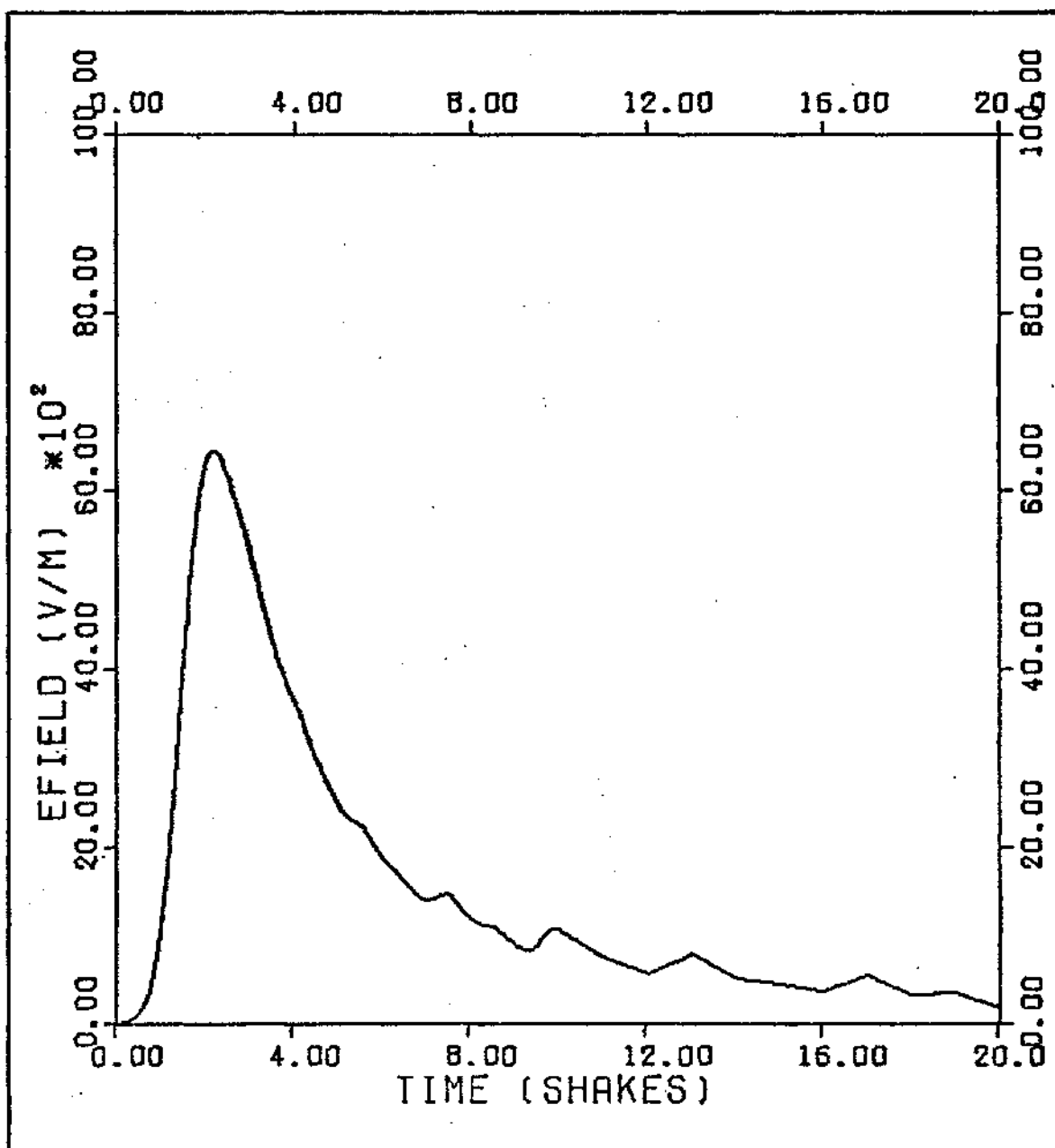


Fig. 5. Plot of $E(t)$ at target from a typical run

$$X = 0 \text{ meters} \quad (66a)$$

$$Y = 0 \text{ meters} \quad (66b)$$

$$Z = 0 \text{ meters} \quad (66c)$$

$$HOB = 100 \text{ km} \quad (66d)$$

$$Y_Y = .001 \text{ kt} \quad (66e)$$

Each of the above parameters was systematically varied while holding the others constant. The other inputs were held constant at the values shown in equations (65).

The results of the variation in X are shown in Fig. 6. Since the X axis is perpendicular to the magnetic field the symmetry about $X = 0$ is expected. The decrease in peak value of E for increasing distance from ground zero is due to the increasing distance from the burst.

The results of the variation in Y are shown in Fig. 7. Here the peak values of E depend on the angle between \vec{r} and \vec{B}_0 , θ . When $\theta = 180^\circ$ ($A = -70^\circ$ and $Y = -275 \text{ km}$) the peak E drops to zero. The maximum peak E is skewed toward $A = 20^\circ$ ($\theta = 90^\circ$ and $Y = 36 \text{ km}$). The maximum is not exactly at $A = 20^\circ$ because of the increased distance from the burst. These characteristics are expected since an electron moving perpendicular to the magnetic field would feel the strongest acceleration from it while an electron moving parallel to the magnetic field would feel no acceleration at all.

The results of variation in Z are shown in Fig. 8. In this case, both the direct and the reflected waves were calculated at each point below the top of the absorption

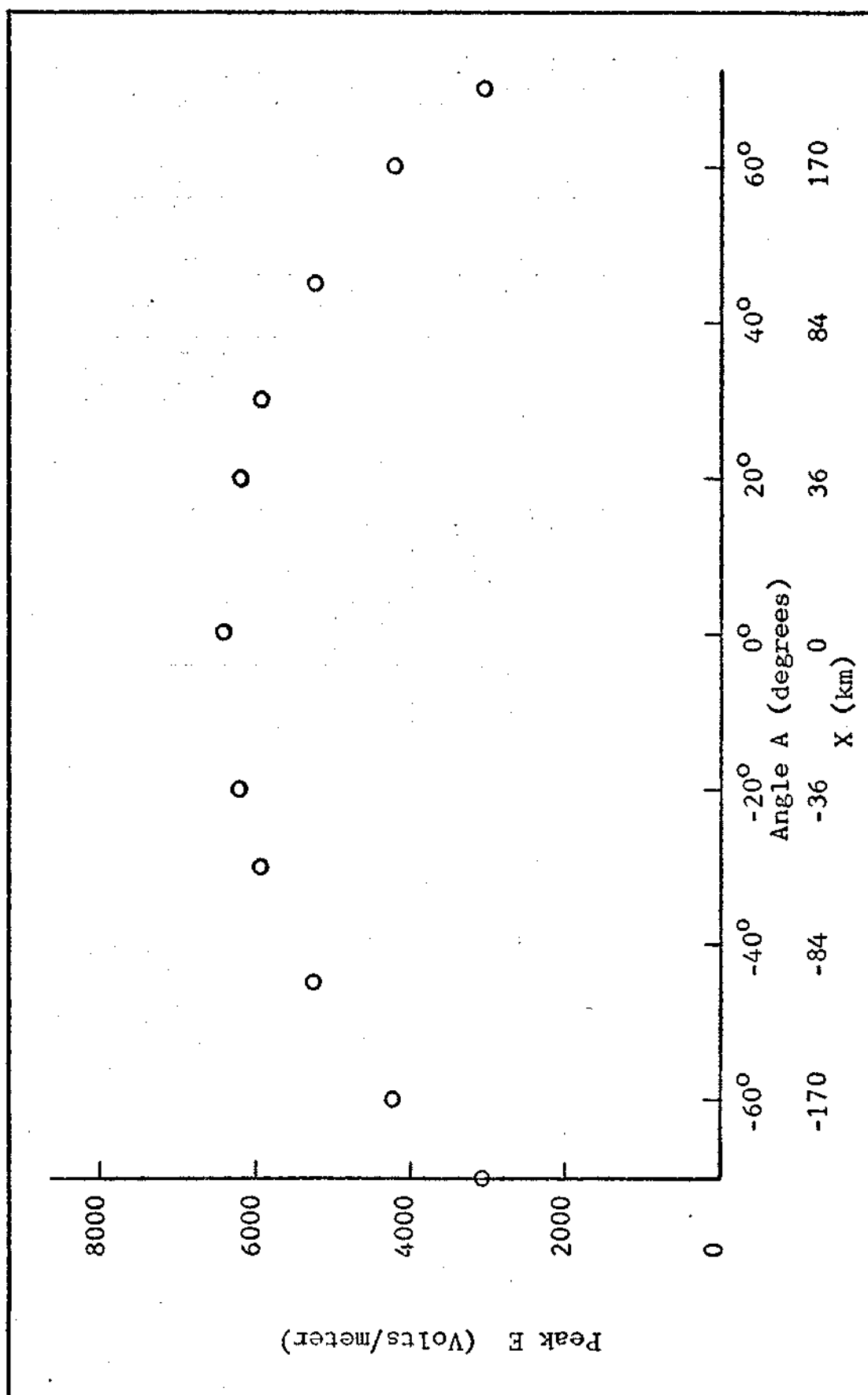


Fig. 6. Variation in the X Direction ($Y=0$, $Z=0$, $HOB=100\text{km}$, $Y_Y=0.001\text{kt}$)

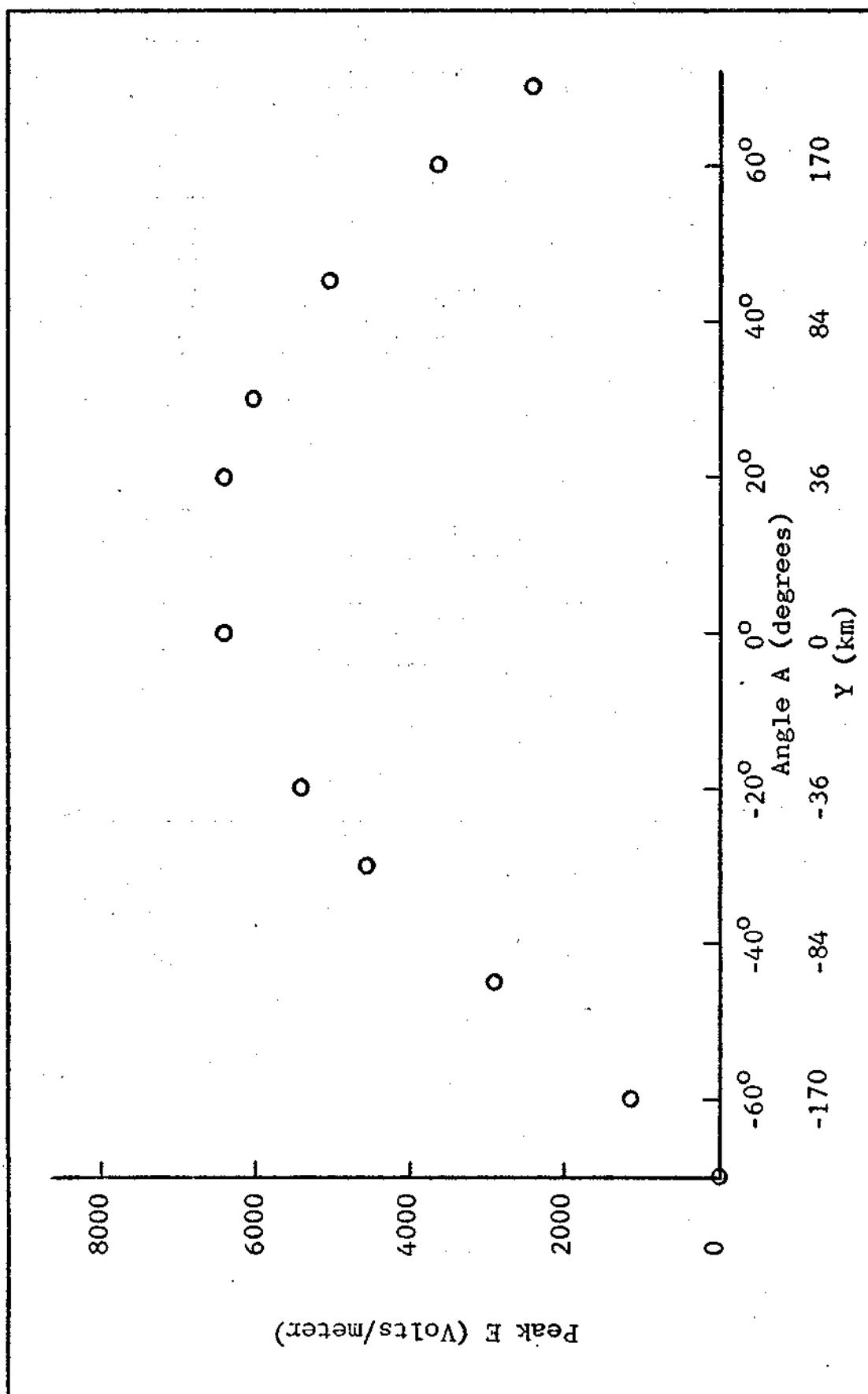


Fig. 7. Variation in Y direction ($X=0$, $Z=0$, $HOB=100\text{km}$, $Y_Y=.001\text{kt}$)

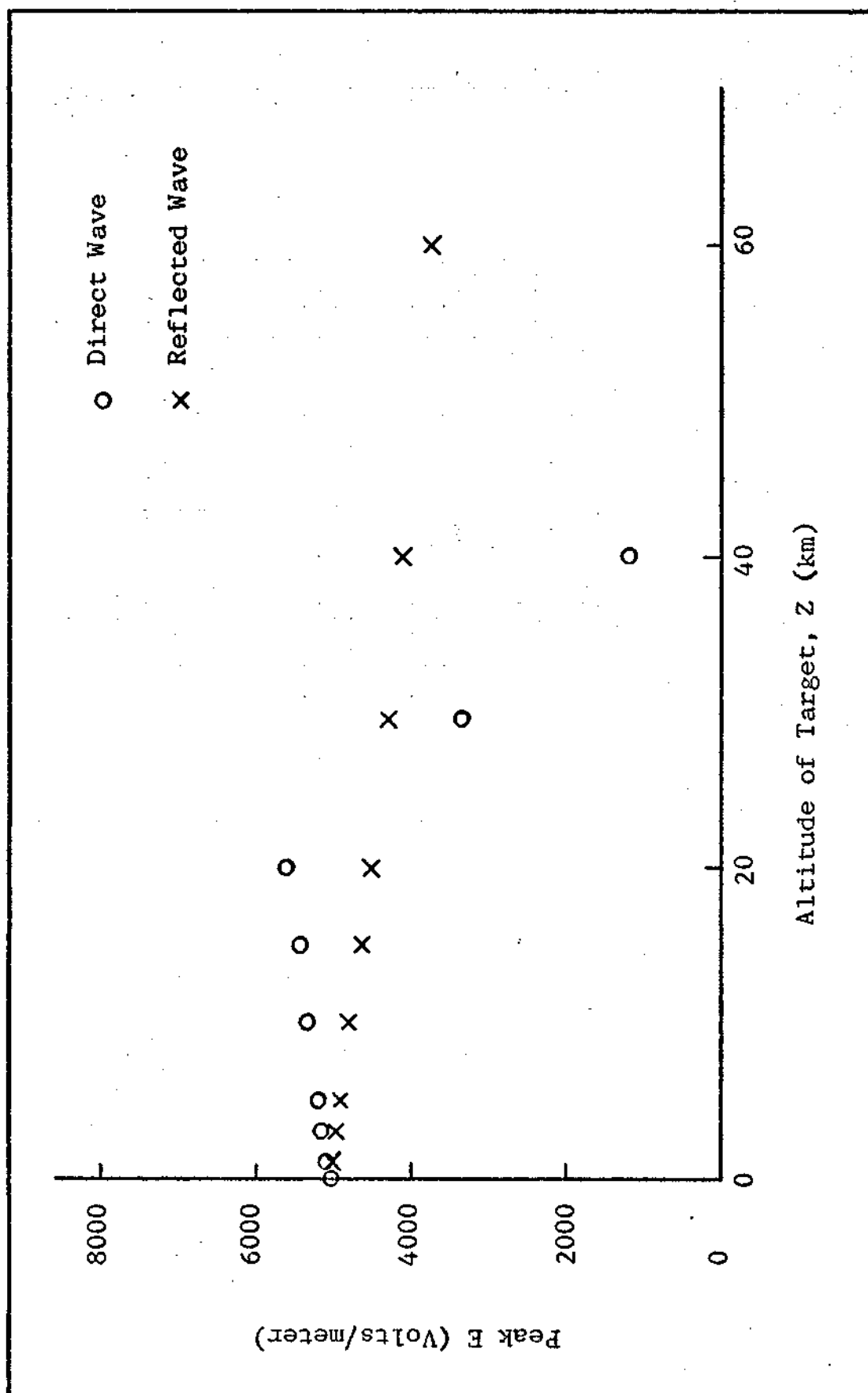


Fig. 8. Variation in Z Direction ($X=0$, $Y=100\text{km}$, $\gamma=.001\text{kt}$, $HOB=100\text{km}$)

region. Note that $Y = 100$ km for these runs. As expected, the direct wave falls off rapidly as the target altitude passes through the absorption region, since less of the absorption region contributes to the wave with each increase in altitude. The crossover point where the reflected wave becomes the largest occurred at 25 km in this case. Above ground zero the crossover point was 29.4 km. The altitude of the crossover point is both yield and geometry dependent. It is necessary for the user to calculate both waves whenever there is any doubt which one is the largest.

The reflected wave calculation assumes 100% reflection from the ground and no attenuation in the absorption region or the ionosphere. These assumptions are reasonable if it is recalled that only the high frequency component is being considered and that it requires at least

$$\frac{40 \text{ km}}{3(10)^8 \text{ m/sec}} = 133 \text{ } \mu \text{ sec} \quad (67)$$

for the wave to leave the absorption region, reach the earth, be reflected, and return to the absorption region. This length of time is enough for a significant number of the free electrons to recombine and reduce the effective conductivity of the absorption region.

The results of variation in HOB are shown in Fig. 9. For all values of HOB attempted below 60 km the code went unstable. Infinite values for E were obtained which resulted in abnormal termination of the calculations. This is

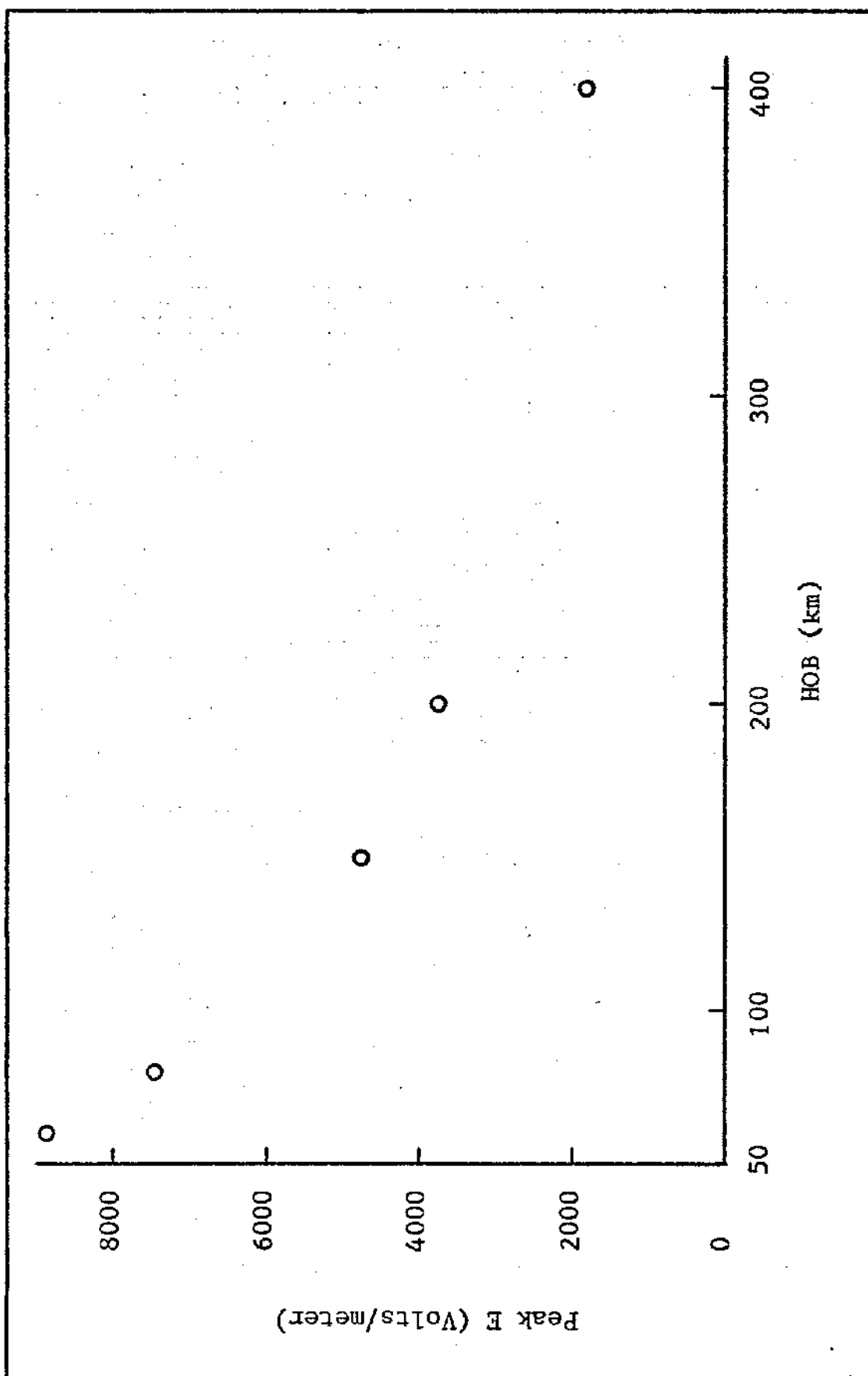


Fig. 9. Variation in Height of Burst ($X=0$, $Y=0$, $Z=0$, $Y_{\gamma}=0.001\text{kt}$)

expected since the burst is assumed to be distant from the absorption region (equations 9 and 10).

The results of variation in gamma yield are shown in Fig. 10. For all gamma yields attempted above 60 tons the code went unstable, giving infinite values for E. However, the instability always occurred at times later than the natural peak value of E. For example, with 80 tons of gamma yield, the natural peak occurred at 1 shake and the instability occurred at 10 shakes. By using the natural peak value and ignoring the instability, reasonable values for peak E were obtained up to 1 kt of gamma yield.

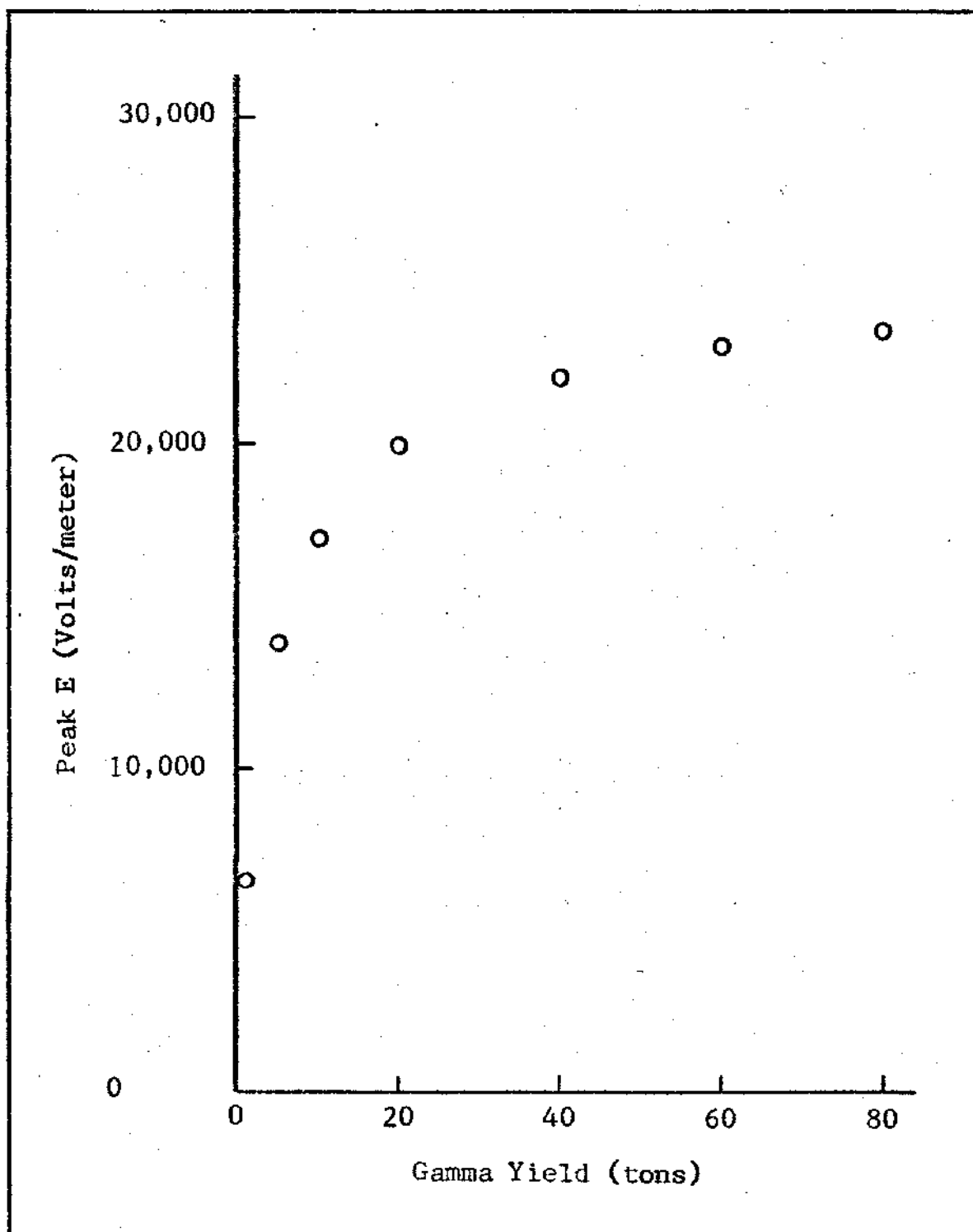


Fig. 10. Variation in Gamma Yield ($X=0$, $Y=0$, $Z=0$, HOB=100km)

V. Discussion and Recommendations

Limitations

Most of the limitations of the code are inherent in the model upon which it is based. Approximations such as a flat earth, a uniform magnetic field, and constant speed Compton electrons can be improved only by changing the model. In addition, the effect of the self generated electromagnetic fields on the motion of the Compton electrons is ignored, as is recombination of both primary and secondary electrons. The possibility of a single gamma ray interacting to produce more than one Compton electron is not allowed. In the absorption region the contribution of the non-propagating radial component of the electric field is neglected. Also, the model is not easily adapted to multi-group gamma transport, or to multiple burst calculations.

The code calculates only the effect of the gamma rays. The user must keep in mind that X-ray generated EMP becomes important for bursts above 100 km.

The code does not account for the increase in altitude of the absorption region for slant angles (angle A in Fig. 1) greater than 60° which is indicated by Latter and LeLevier (Ref 4).

Since 97% of the running time of the code is used for numerical iteration it is not practical to adapt the code to run more than one target at a time. Two targets would

merely double the running time, so it is simpler to just make two runs. Typical requirements are 200 seconds running time with 33000₈ words of central memory on the CDC 6600 computer using NDELR = 50 and TMAX = 20 shakes.

Uses

The code can be used to calculate the peak value of the E field at a target, anywhere on or above ground level, resulting from a nuclear burst above 60 km altitude with a gamma yield up to 60 tons. Either the direct or the ground reflected wave can be calculated. With special care, bursts up to 1 kt of gamma yield can be used.

Recommendations

In the interest of accuracy, the targets should be located such that the slant angle, A, is between -60° and +60°.

By accepting a much longer running time the accuracy and hopefully, the stability of the code could be improved by using a smaller step size in the integration of the Compton current equations. Reducing the step size from one tenth of the Compton lifetime to one shake would require approximately ten times as much running time as the code presently requires. This possibility should be investigated further to determine the optimum step size for obtaining the best relationship between accuracy and running time.

Another possibility for increasing the accuracy and stability of the code is to reduce the step size in r . The present code has the capability of dividing the absorption region into 500 steps in r along the line of sight. Of course, the running time required for 500 steps is ten times that required for 50 steps. A modification of the code to allow more than 500 steps would increase the amount of computer core required as well as increasing the running time. This provides another area for investigation to determine the best trade off point between accuracy and running cost.

These two possibilities could be investigated with minor modifications to the present code. However, the computer time required would be considerable.

In addition, there are numerous possibilities for improvements in the model itself. Some of the more important ones are;

- Using multigroup gamma transport.

- Using multigroup Compton electrons.

- Allowing angular distribution of Compton electrons.

- Using self consistent electromagnetic fields.

- Including the low frequency components.

Each of these would require major modifications to the present code.

Bibliography

1. Kinsley, O.V. Introduction to the Electromagnetic Pulse, Wright-Patterson AFB: Air Force Institute of Technology, March 1971. (GNE/PH/71-4).
2. Karzas, W. J. and R. Latter. "Detection of the Electromagnetic Radiation from Nuclear Explosions in Space", Physical Review, Vol 137, No. 5B. pages 1369-1378, March 8, 1965. (Also published as EMP Theoretical Note 40).
3. Pomranning, G. C. "Early Time Air Fireball Model for a Near-Surface Burst", DNA 3029T, March 1973.
4. Latter, R. and R. E. LeLevier. "Detection of Ionization Effects from Nuclear Explosions in Space", Journal of Geophysical Research, Vol. 68, No. 6, March 15, 1963.
5. Wylie, C. R. Jr. Advanced Engineering Mathematics, New York: McGraw-Hill Book Co. 1966. (Third Edition).
6. Lecture Notes, Electromagnetic Waves, EE 6.30, Air Force Institute of Technology, Wright-Patterson AFB, Summer, 1973. (Course taught by Maj. Carl T. Case.)

Appendix A

EMP Code User's Guide

EMP Code User's Guide

The code is run the same as any other Fortran Extended program, but due to the running time it should be converted to binary form before execution. The plotting subroutine requires an on-line plotter and both linear and log plotting library subroutines.

The input data is read in the following order:

Data card #1, using FORMAT (7F10.0, 2I5), contains;

X,Y,Z	The target coordinates in meters
HOB	The height of the burst in kilometers (60 km \leq HOB)
GAMYLD	The gamma yield in kilotons (GAMYLD \leq 1 kt)
BFIELD	The Earth's magnetic field in wb/m ²
BANGLE	The magnetic field dip angle in degrees
NDELRL	The number of steps in r taken through the absorption region (50 \leq NDELRL \leq 500)
OUT	The output control parameter

Data card #2, using FORMAT (I3), contains;

ITER	The time period covered by the iterations in shakes (10 \leq ITER \leq 100) (ITER = TMAX)
------	--

Data card #3, using FORMAT (4F10.0), contains;

A	Pomranning constant α in inverse shakes
B	Pomranning constant β in inverse shakes
RN	Pomranning constant N in shakes
TO	Pomranning constant τ_0 in shakes

Default values are provided for BANGLE, BFIELD, and NDELRL. They are 40° , 0.00002 wb/m^2 , and 50 respectively. If these default values are desired, zero must be punched in their respective card fields.

The ground reflected wave at the target is obtained by reading in the target altitude, Z, as a negative number. For any target within the absorption region, both the direct and the ground reflected wave should be calculated to determine which one is the strongest.

For values of GAMYLD between 0.06 kilotons and 1.0 kilotons the code will most likely go unstable. This instability occurs after the real peak has been calculated, but the peak value printed out may not be the real peak. Since execution is terminated when the field becomes greater than $1\text{E}15 \text{ V/m}$, the array search can result in a false peak value. In this case, the array itself (or the plot) can be used to determine the real peak value.

Increasing NDELRL makes the step size in r through the absorption region smaller and the calculation becomes more accurate. However, total running time varies directly with changes in NDELRL. For example, using NDELRL = 100 instead of NDELRL = 50 will approximately double the running time required for NDELRL = 50.

There are four output options provided. Option 0 prints out the informative messages, the calculated peak value at the target, the E array, and the τ array. Option 1 adds a linear plot of the first 20 shakes and a log-log

plot of 100 shakes of E as a function of τ at the target. Option 2 includes both Option 0 and Option 1 and adds a printout of E and σ as a function of τ at the bottom of the absorption region. Option 3 deletes the plots from Option 2. The last two options are primarily for debugging since a partial printout is made for each completed iteration even if execution is terminated before the iterations are completed. The first two options are best for production runs.

The only requirements on the Pomranning constants are N must be chosen such that equations (61) and (62) are satisfied, all of them must be positive, and $\alpha > \beta$.

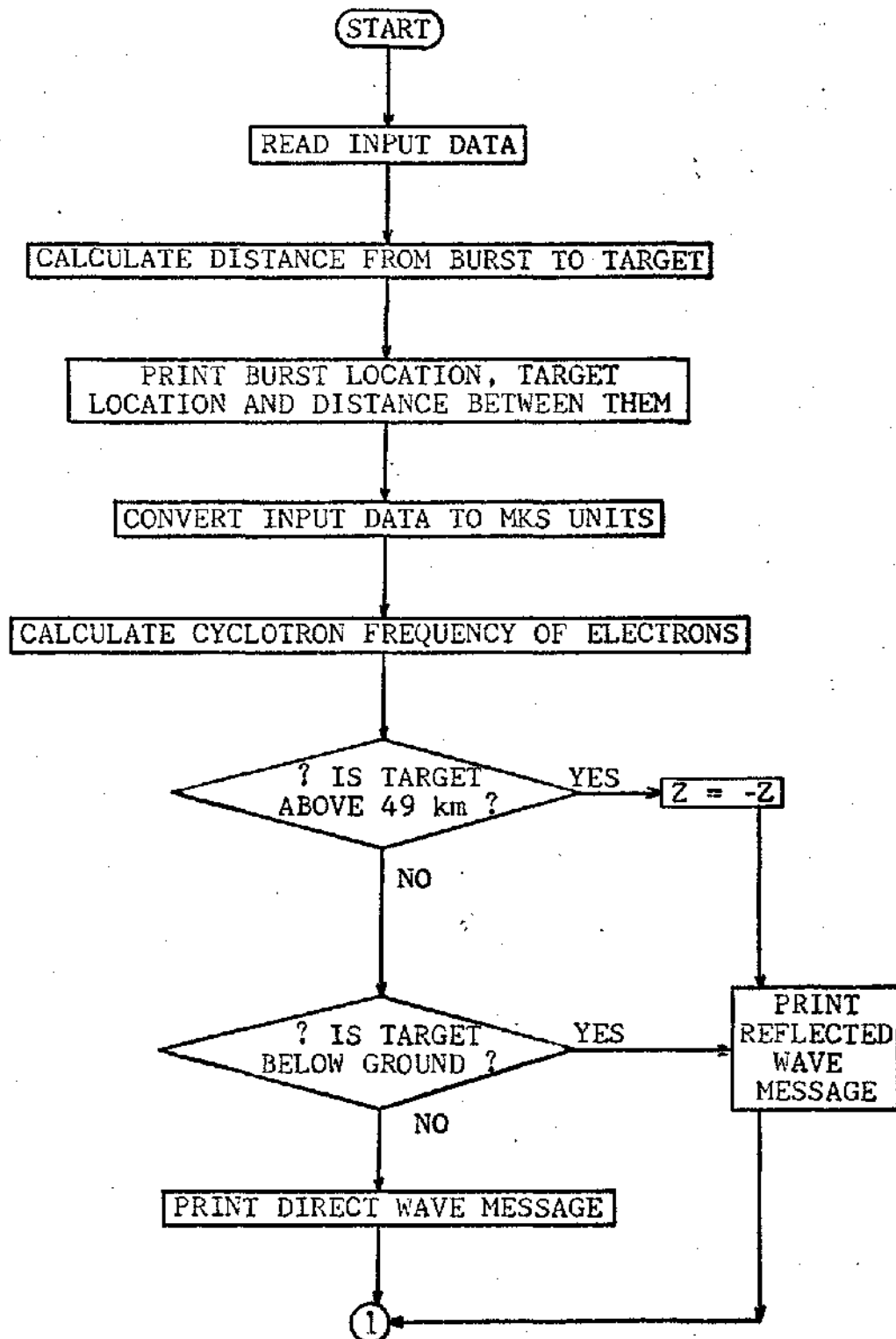
Increasing ITER also increases the running time. For ITER = 10 shakes, running time is approximately 180 seconds on the CDC 6600 computer. For ITER = 100 shakes, running time is approximately 340 seconds. A good compromise, which gives nice looking plots, is ITER = 20 shakes with a running time of approximately 200 seconds.

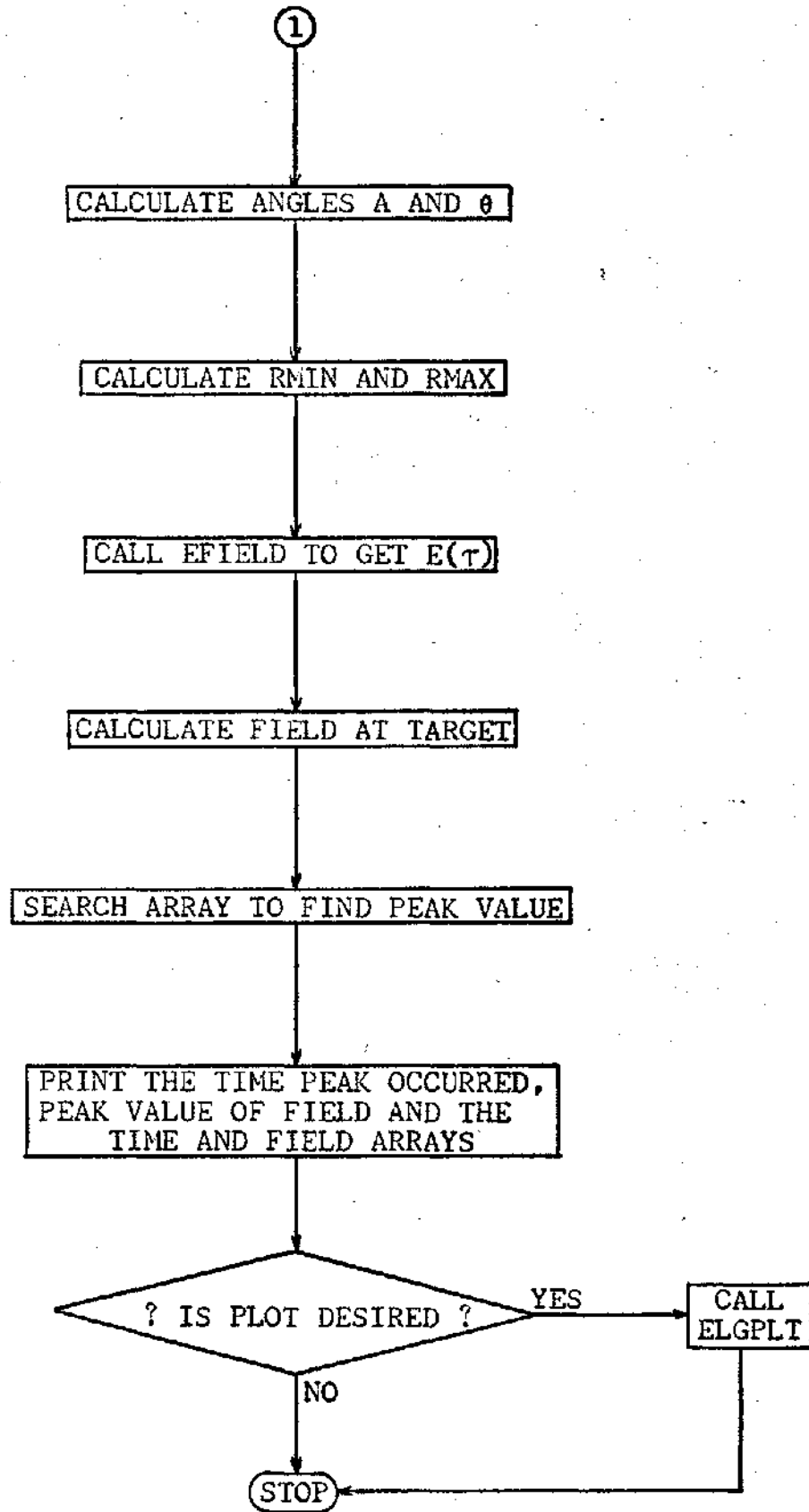
In binary form, the code requires 33000_8 words of core on the CDC 6600 computer.

Appendix B

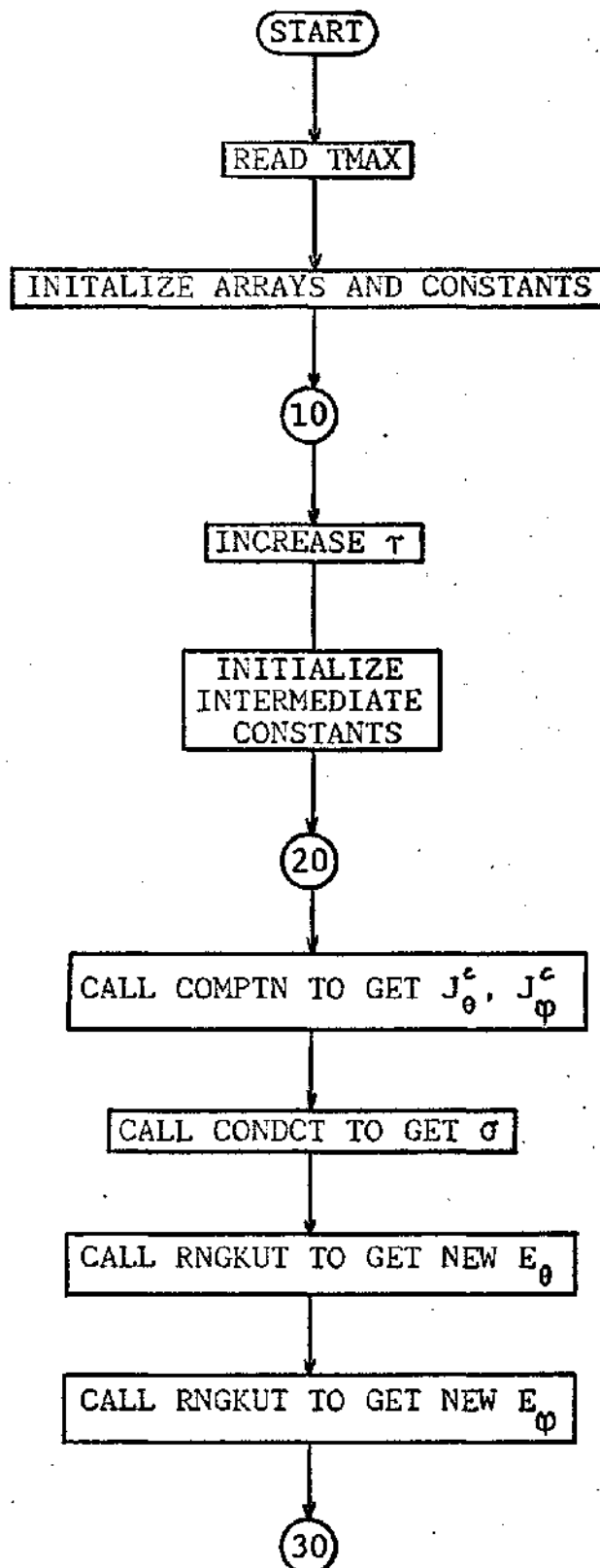
EMP Code Flow Charts

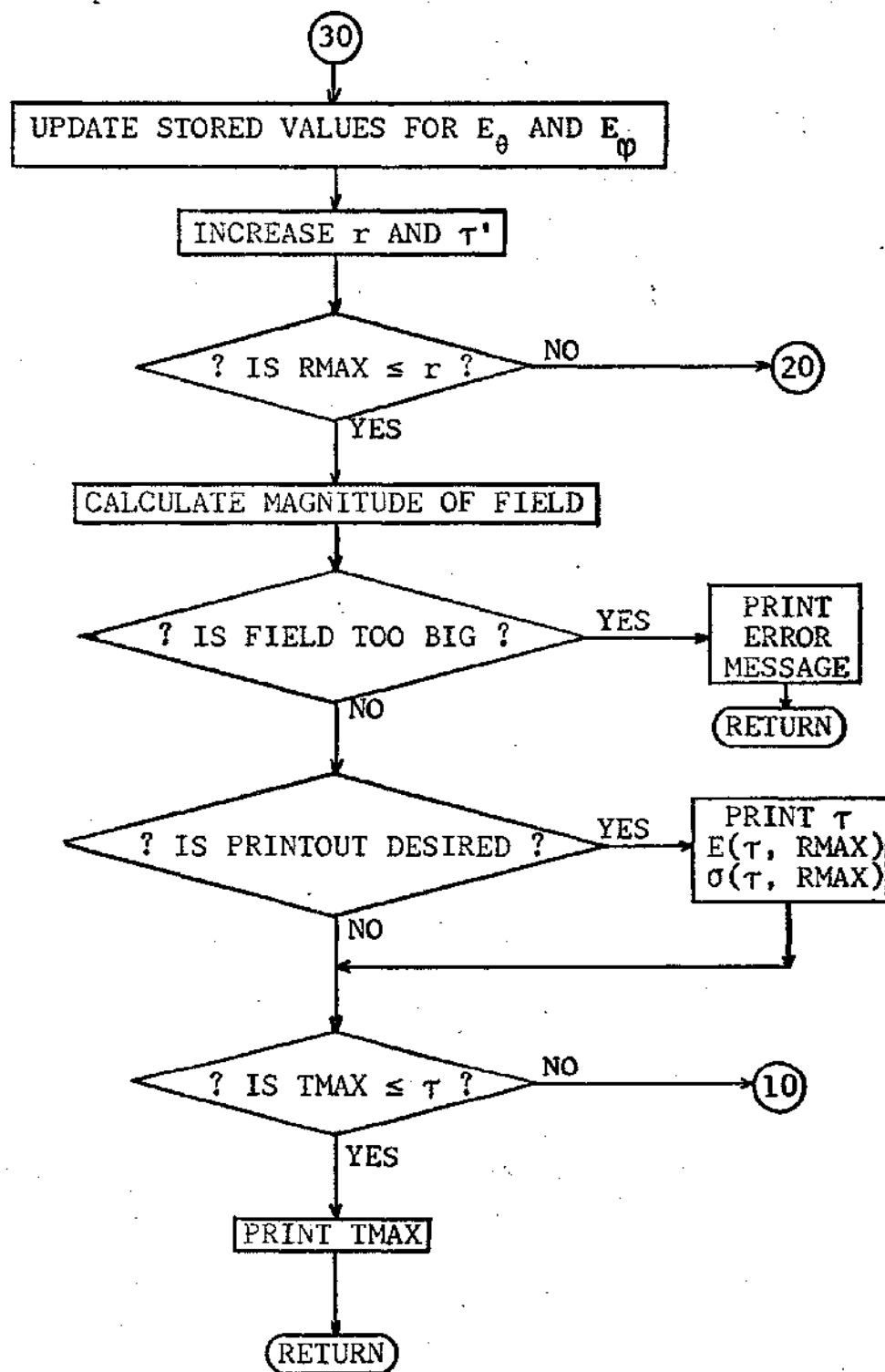
PROGRAM CONTRL



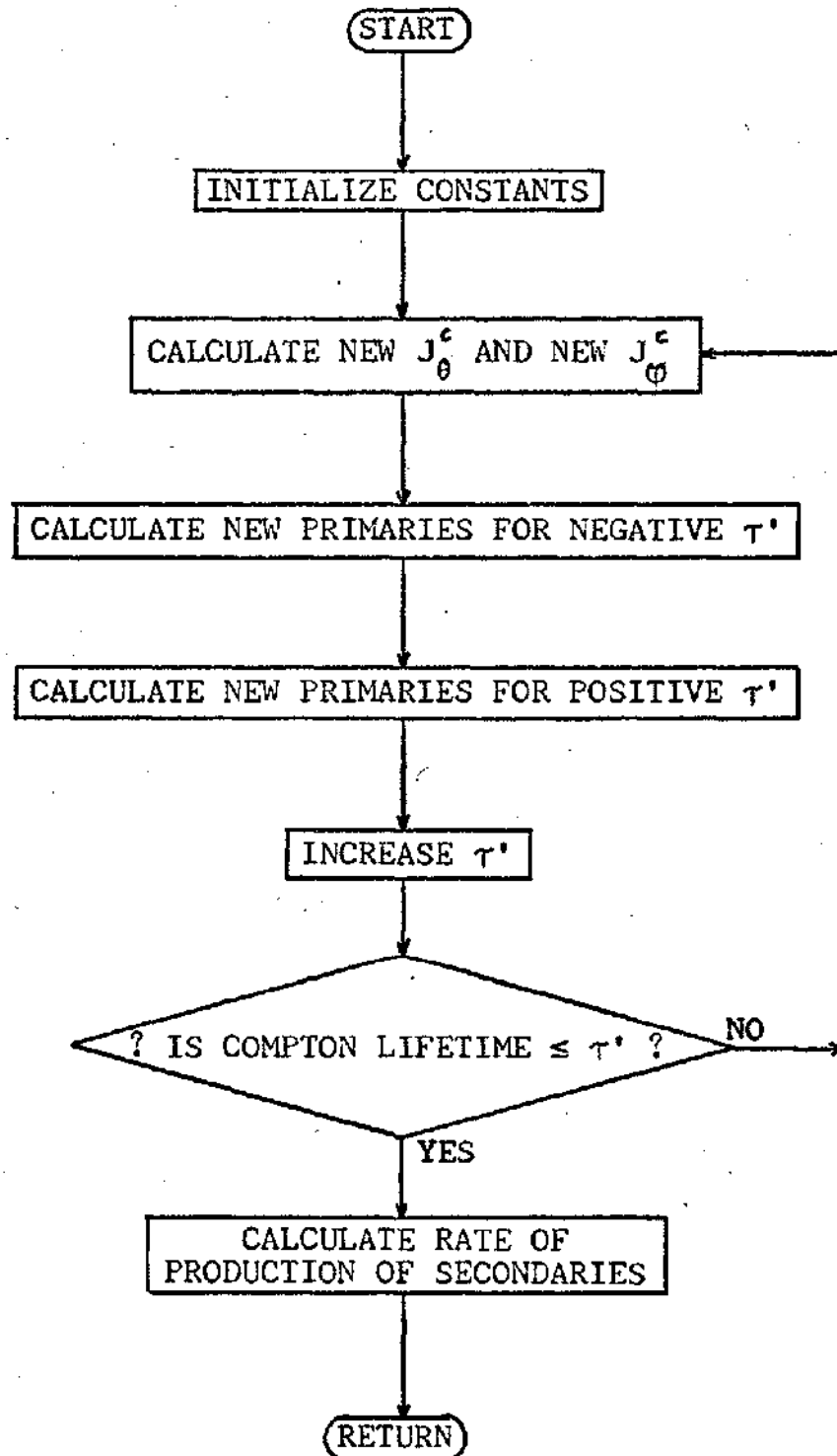


SUBROUTINE EFIELD

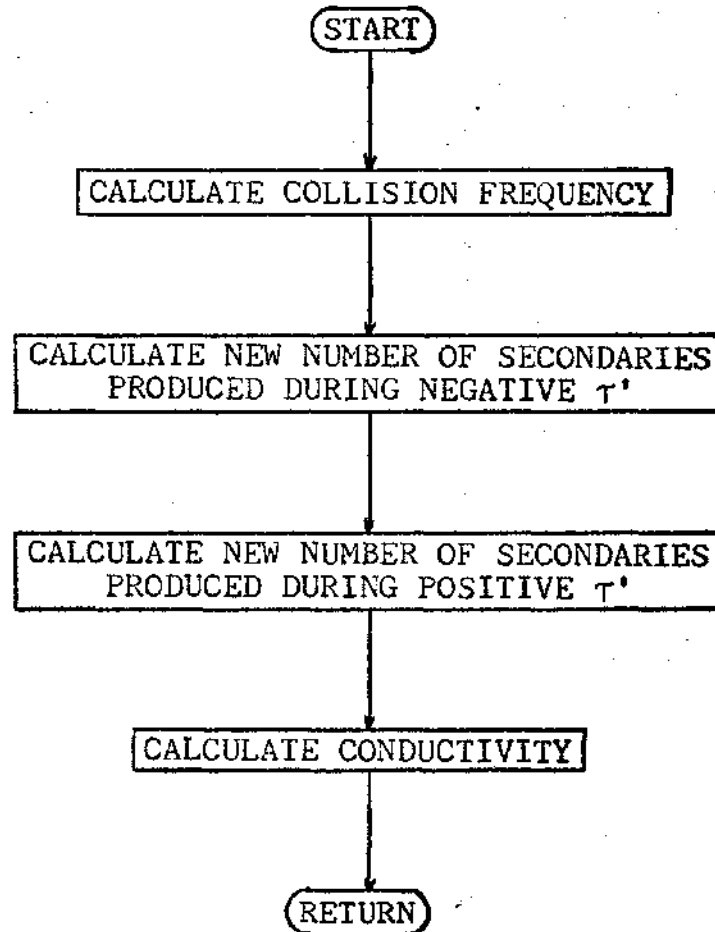




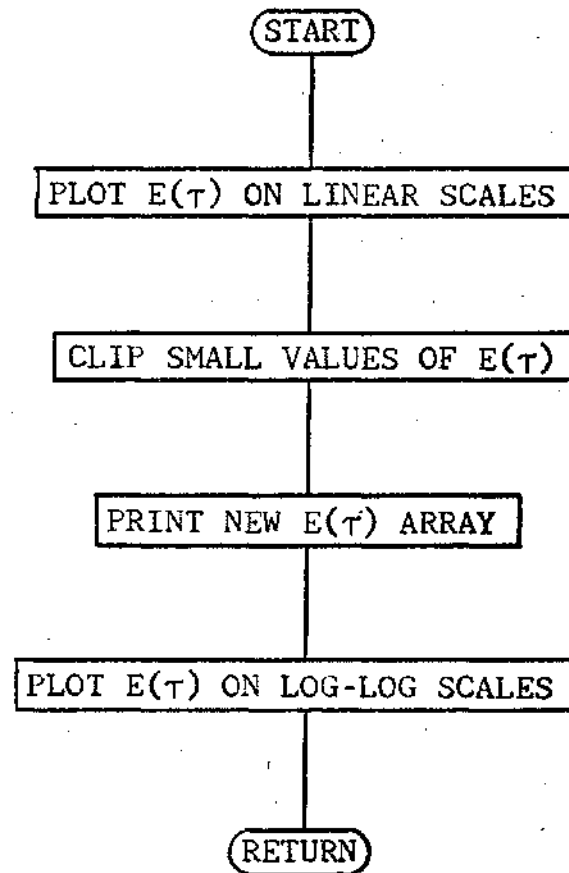
SUBROUTINE COMPTN



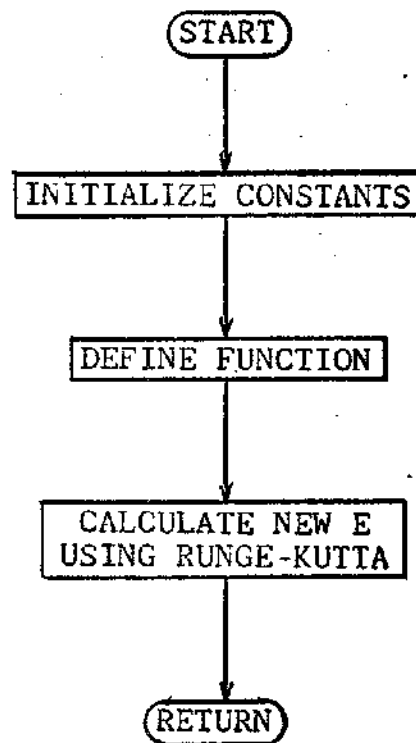
SUBROUTINE CONDCT



SUBROUTINE ELGPLT



SUBROUTINE RNGKUT



Appendix C

EMP Code Listing

6

```
C C SET UP DEFAULT VALUES CNTL 370
C CNTL 380
CNTL 390
C IF(BANGLE.EQ.0.) BANGLE=40. CNTL 400
C IF(RFIELD.EQ.0.) RFIELD=0.00002 CNTL 410
C IF(NDELR.EQ.0) NDELR=50 CNTL 420
C CNTL 430
C CONVERT DATA TO MKS UNITS CNTL 440
C CNTL 450
C HCR=HOB*1000. CNTL 460
C GAMYLO=2.61625E25*CAMYLC CNTL 470
C BANGLE=0.017453295*BANGLE CNTL 480
C OMEGA=1.6E-19*RFIELD/(3.505*%11E-31) CNTL 490
C CNTL 500
C PRINT TYPE OF CALCULATION CNTL 510
C CNTL 520
C REFLCT=49000. CNTL 530
C IF(Z.GT.REFLCT)PRINT 2007 CNTL 540
C IF(Z.LT.0.0) PRINT 2008 CNTL 550
C IF(Z.LE.REFLCT.AND.Z.GE.0.0) PRINT 2009 CNTL 560
C CNTL 570
C REFLECTED WAVE CALCULATION ASSUMES 100% REFLECTION CNTL 580
C AND USES MIRROR IMAGE CF TARGET BELOW GROUND CNTL 590
C SET Z = -Z IF REFLECTED WAVE IS TO BE USED CNTL 600
C CNTL 610
C IF(Z.GT.REFLCT) Z=-Z CNTL 620
C IF(Z.GT.HOB-1000.) PRINT 2007 CNTL 630
C IF(Z.GT.HOB-1000.) Z=-Z CNTL 640
C CNTL 650
C DETERMINE ANGLES CNTL 660
C CNTL 670
C R=SQRT(X*X+Y*Y+(HOB-Z)**2) CNTL 680
C A=ACOS((HOB-Z)/R) CNTL 690
C THETA=ACCS(CCS(BANGLE)*Y/R+SIN(BANGLE)*(Z-HOB)/R) CNTL 700
C CNTL 710
C DETERMINE RMIN AND RMAX CNTL 720
C
```

```

ZRMIN=5.E4
IF(HOB.LT.ZRMIN) ZRMIN=HOB
TA=((ZRMIN-HOB)/(Z-HOB)
XRMIN=TA*X
YRMIN=TA*Y
RMIN=SQRT(XRMIN**2+YRMIN**2+(ZRMIN-HOB)**2)
ZRMAX=Z
IF(Z.LT.2.E4) ZRMAX=2.E4
TB=((ZRMAX-HOB)/(Z-HOB)
XRMAX=TB*X
YRMAX=TB*Y
RMAX=SQRT(XRMAX**2+YRMAX**2+(ZRMAX-HOB)**2)

C
C
C
      CALCULATE EFIELD AT ECITCM OF ABSORFTION REGION
      CALL EFIELD(E,TIME,RMIN,RMAX,NOELR,HOB,A,THETA,OMEGA,GAMYLDC,
1STORE2)
C
C
C
      CALCULATE EFIELD AT TARGET
      IF(R.LE.RMAX) GO TO 3
      DO 1 I=1,190
      E(I)=E(I)*RMAX/R
1
C
C
C
      FIND PEAK VALUE CF EFIELD
      BIG=0.0
      DO 2 I=1,190
      IF(E(I).GT.BIG) 4,2
      BIG=E(I) $ II=I
      CONTINUE
      PRINT OUTPUT
      PRINT 2010,TIME(II)
      PRINT 2005,BIG
2
C
C
C

```

```

CNTL 730
CNTL 740
CNTL 750
CNTL 760
CNTL 770
CNTL 780
CNTL 790
CNTL 800
CNTL 810
CNTL 820
CNTL 830
CNTL 840
CNTL 850
CNTL 860
CNTL 870
CNTL 880
CNTL 890
CNTL 900
CNTL 910
CNTL 920
CNTL 930
CNTL 940
CNTL 950
CNTL 960
CNTL 970
CNTL 980
CNTL 990
CNTL1000
CNTL1010
CNTL1020
CNTL1030
CNTL1040
CNTL1050
CNTL1060
CNTL1070
CNTL1080

```



```

C
C
C
      PRINT 2001
      PRINT 2002, (TIME(I), I=1, 190)
      PRINT 2003
      PRINT 2004, (E(I), I=1, 190)

      IF DESIRED, MAKE PLOT

      IF (OUT.LE.0.0-GR.OUT.GE.3) STOP
      CALL ELGFLT (E, TIME, RIG)
      STOP

      1001 FCRMAT (7F10.0, 2I5)
      2010 FCRMAT (//5X, "PEAK OCCURRED AT", F5.1, " SHAKES"//)
      2009 FCRMAT (5X, "DIRECT WAVE IS BEING CALCULATED"//)
      2008 FCRMAT (5X, "REFLECTED WAVE IS BEING CALCULATED"//)
      2007 FCRMAT (5X, "TARGET IS ABOVE ASCRIPTION REGION SO REFLECTED WAVE IS
      1BEING CALCULATED"//)
      2006 FCRMAT ("1 THE BURST WITH GAMMA YIELD CF", 1PE10.3, " KILOTONS"
      1 /5X, "IS AT AN ALTITUDE CF", 1PE10.3, " KILOMETERS."
      2 //5X, "THE TARGET IS AT COORDINATES", 3(5X, 1PE10.3)
      3 /5X, "WHICH IS", 1PE10.3, " METERS FROM THE BURST"//)
      2005 FCRMAT (//5X, " * * * * * PEAK EFIELD AT TARGET IS ", 1PE10.3, " VOLTS/METER *"
      1 /5X, " * * * * * "
      2 /5X, " * * * * * ")
      2004 FCRMAT (19(10(3X, 1PE10.3)))
      2003 FCRMAT (//5X, "EFIELD VALUES AT TARGET (IN V/M) ARE"//)
      2002 FCRMAT (19(10(4X, F5.1, 4X)))
      2001 FCRMAT ("1 TIMES USED (IN SHAKES) ARE"//)
      END
CNTL1090
CNTL1100
CNTL1110
CNTL1120
CNTL1130
CNTL1140
CNTL1150
CNTL1160
CNTL1170
CNTL1180
CNTL1190
CNTL1200
CNTL1210
CNTL1220
CNTL1230
CNTL1240
CNTL1250
CNTL1260
CNTL1270
CNTL1280
CNTL1290
CNTL1300
CNTL1310
CNTL1320
CNTL1330
CNTL1340
CNTL1350
CNTL1360

```

```
C          SUBROUTINE EFIELD(E,TIME,RMIN,RMAX,NDEL2,HOB,A,TETA,OMEGA,GAMVLJ,  
C      ISTORE)  
C  
C              CALCULATE THE FIELD IN THE ABSORPTION REGION  
  
C      DIMENSION E(190),TIME(190),STORE2(NDEL2)  
C      REAL JTHETA,JPHI  
C      INTEGER OUT  
C      COMMON OUT,AP,BP,RNP,IOP  
  
C      ITER IS TIME OF ITERATION IN SHAKES 10<=ITER<=100  
C      READ ITER AND CHANGE IT TO NUMBER OF TIME STEPS  
  
C      READ 100,ITER  
C      ITER=100+(ITER-10)  
  
C      INITIALIZE ARRAYS AND CONSTANTS  
  
C      READ 101,AP,BP,RNP,IOP  
C      FORMAT('F10.0')  
C      DO 51 J=1,100  
C        E(J)=0.0 $ TIME(J)=0.1*J  
C        CONTINUE  
C      DO 71 J=101,190  
C        E(J)=0.0 $ TIME(J)=1.0*(J-100.)  
C        CONTINUE  
C      DO 51 L=1,NDEL2 $ STORE2(L)=0.  
C        CONTINUE  
C      ETHE=0.    $ DELRN=NDEL2 $ T=0.   $ DT=1.    $ EPHI=0.  
C      DELTAR=(RMAX-RMIN)/NDEL2 $ R=RMIN+DELTAR $ RNP=1.E-3*RNP  
  
C      START INTEGRATIONS  
C      OUTSIDE LOOP IS FOR CALCULATION IN RETARDED TIME  
C      INSIDE LOOP IS FOR INTEGRATION IN R AT EACH TIME STEP
```



```

CC 21 I=1,190 $ Y=T+(1.E-9)*CT $ TIME(I)=T*(1.E8)
IT=I
IF(I.GT.ITER) GO TO 42
TP=-DELTAR/2+.68E8$ CTP=TF $ SIGMA=0.$ STORE1=0.
CO 31 K=1,NDEL R
CALL CCMPFN(JTHETA,JPHI,I,R,A,THETA,OMEGA,PCB,GAMYLD,TP,PRI,FRI2)
CALL CCNOCT(SIGMA,PRI,CTP,C1,HOB,R,A,STORE1,STORE2,K,NDEL R,FRI2)
CALL RNGKUT(ETHENW,ETHE,R,DELTAR,SIGMA,JTHETA)
CALL RNGKUT(EPHINW,EPHI,R,DELTAR,SIGMA,JPHI)
ETHE=ETHENW $ EPHI=EPHINW $ R=R+DELTAR
TP=TP+CTP
CONTINUE
31 FIND MAGNITUDE OF EFIELD
C
C
C
C CHECK FOR DIVERGENCE OF SOLUTION
C
C
C
C IF(E(I).GT.1.E15) GO TO 52
IF (I.EQ.100) DT=10.
R=RMIN+DELTAR
IF DESIRED, PRINT OUTPT
C
C
C
C IF (OUT-1.LE.0) GO TO 21
PRINT 5,I,TIME(I),E(I),SIGMA
CONTINUE
21 PRINT MESSAGE AFTER TERMINATION OF TIME LOOP
C
C
C
C PRINT 201,TIME(ITER)
RETURN
42 PRINT MESSAGE AFTER ABNORMAL TERMINATION OF TIME LOOP
C
C
C

```

EFLE 730
EFLE 740
EFLE 750
EFLE 760
EFLE 770
EFLE 780
EFLE 790
EFLE 800
EFLE 810
EFLE 820
EFLE 830
EFLE 840
EFLE 850
EFLE 860
EFLE 870

```

52      PRINT 301
      PRINT 201, TIME(IT)
      IF(IT.LT.10) RETURN
      C
      C      SET LAST 5 VALUES OF EFIELD TO 0.0 TO AVOID INCORRECT PEAK
      C
      L(IT)=E(IT-1)=E(IT-2)=E(IT-3)=E(IT-4)=E(IT-5)=0.0
      RETURN
100  FORMAT (I3)
5    FORMAT (" I =", I4, "      TIME =", F6.1, " SHAKES      E(T,RMAX) =",
11PE10.3, " VOLTS/METER      SIGMA =", 1PE10.3, " MHO/METER")
201  FORMAT (//5X, "ITERATION TERMINATED AFTER", F5.1, " SHAKES"//)
301  FORMAT (//15X, "*****"/15X, "***** SOLUTION HAS GONE UNSTABLE"
1/15X, "*****"//)
      END

```

CNDT 10
CNDT 20
CNDT 30
CNDT 40
CNDT 50
CNDT 60
CNDT 70
CNDT 80
CNDT 90
CNDT 100
CNDT 110
CNDT 120
CNDT 130
CNDT 140
CNDT 150
CNDT 160

```

      SUBROUTINE CCNDCT(SIGMA, FFI, CTP, DT, HOB, R, A, STORE1, STORE2, K, NDEL,
1PRI2)
      C
      C      CALCULATES SIGMA AFTER FINDING
      C      NSECONDARY FROM NPRIMARY
      C
      STORE1 CCNTAINS INTEGRAL FOR NEGATIVE TAU
      STORE2 CCNTAINS INTEGRAL FOR POSITIVE TAU
      C
      DIMENSION STORE2(NDEL)
      CCLISN=4.E12*EXP((R*CCS(A)-PCB)/7000.)
      STORE1=STORE1-PRI*CTF
      STORE2(K)=STORE2(K)+PRI2*CT*(1.0E-9)
      SEC=STORE2(K)-STORE1
      SIGMA=(1.6E-19**2)*SEC/(CCLISN*9.11E-31)
      RETURN $ END

```

```

SUBROUTINE CCMPIN(JTHETA,JPHI,T,R,A,THETA,CMEGA,HOB,GAMYL,C,IF,FRI,CMTN 10
1PRI2) CMTN 20
CMTN 30
CMTN 40
CMTN 50
CMTN 60
CMTN 70
CMTN 80
CMTN 90
CMTN 100
CMTN 110
CMTN 120
CMTN 130
CMTN 140
CMTN 150
CMTN 160
CMTN 170
CMTN 180
CMTN 190
CMTN 200
CMTN 210
CMTN 220
CMTN 230
CMTN 240
CMTN 250
CMTN 260
CMTN 270
CMTN 280
CMTN 290
CMTN 300
CMTN 310
CMTN 320
CMTN 330
CMTN 340
CMTN 350
CMTN 360

      CALCULATE THE TWO COMPONENTS OF THE
      COMPTON CURRENT AT GIVEN T AND R
      CALCULATE NUMBER OF PRIMARY ELECTRONS

      JTHETA IS THETA COMPONENT OF COMPTON CURRENT
      JPHI IS PHI COMPONENT OF COMPTON CURRENT
      TMAX IS COMPTON LIFETIME
      PATH IS ALTITUDE SCALF COMPTON MEAN FREE PATH
      TP IS NEGATIVE RETARDED TIME
      T IS POSITIVE RETARDED TIME
      PRI IS NUMBER OF PRIMARY ELECTRONS GENERATED DURING TP
      PRI2 IS NUMBER OF PRIMARY ELECTRONS GENERATED DURING T
      TPRIME IS VARIABLE OF INTEGRATION

      INITIALIZE CONSTANTS

      REAL JTHETA,JPHI
      JTHETA=0. $ JPHI=0. $ TPRIME=(5.E-9) $ TMAX=CLIFE(R,A,HOB) $ FRI=0.
      DT=TMAX/10. $ PATH=309.*EXP(-(FOR-R*COS(A))/7000.) $ TPRIME=DT$W=DT/2.
      PRI2=0.

      RUNGE-KUTTA INTEGRATION OF COMPTON CURRENT

      DO 31 K=1,10
      RK1=DT*CMTHET(HOB,R,A,THETA,CMEGA,PATH,T,TPRIME,GAMYL)
      RK2=DT*CMTHET(HOB,R,A,THETA,CMEGA,PATH,T,TPRIME+W,GAMYL)
      RK3=RK2
      RK4=DT*CMTHET(HOB,R,A,THETA,CMEGA,PATH,T,TPRIME+DT,GAMYL)
      JTHETA=JTHETA+(RK1+2.*(RK2+RK3)+RK4)/6.
      RK5=DT*CMPHI(HOB,R,A,THETA,CMEGA,PATH,T,TPRIME,GAMYL)
      RK6=DT*CMPHI(HOB,R,A,THETA,CMEGA,PATH,T,TPRIME+W,GAMYL)
      RK7=RK6
      RK8=DT*CMPHI(HOB,R,A,THETA,CMEGA,PATH,T,TPRIME+DT,GAMYL)

```

```

JPHI=JPHI+(RK5+2.*(RK6+RK7)+RK8)/6.
      RUNGE-KUTTA INTEGRATION OF PRIMARIES
      RKP1=DT*RKCMTN(R,THETA,OMEGA,TP,TPRIME)
      RKP2=DT*RKCMTN(R,THETA,OMEGA,TP,TPRIME+W)
      RKP3=RKP2
      RKP4=DT*RKCMTN(R,THETA,OMEGA,TP,TPRIME+DT)
      PRI=PRI+(RKP1+2.*(RKP2+RKP3)+RKP4)/6.
      RP1=DT*RKCMTN(R,THETA,CMEGA,T,TPRIME)
      RP2=DT*RKCMTN(R,THETA,OMEGA,T,TPRIME+W)
      RP3=RP2
      RP4=DT*RKCMTN(R,THETA,CMEGA,T,TPRIME+DT)
      PRI2=PRI2+(RP1+2.*(RP2+RP3)+RP4)/6.
      TPRIME=TPRIME+DT
      CONTINUE
      MULTIPLY PRIMARIES BY 0*G(R)/TMAX
      TO OBTAIN RATE OF PRODUCTION OF SECONDARIES
      PRI=PRI*5.000E4*GOFR(R,A,HOB,PATH,GAMYLD)/TMAX
      PRI2=PRI2*5.0E4*GOFR(R,A,HOB,PATH,GAMYLD)/TMAX
      RETURN $ END

```

```

CMTN 370
CMTN 380
CMTN 390
CMTN 400
CMTN 410
CMTN 420
CMTN 430
CMTN 440
CMTN 450
CMTN 460
CMTN 470
CMTN 480
CMTN 490
CMTN 500
CMTN 510
CMTN 520
CMTN 530
CMTN 540
CMTN 545
CMTN 550
CMTN 560
CMTN 570
CMTN 580

```

CMPT1010
 CMPT1020
 CMPT1030
 CMPT1040
 CMPT1050
 CMPT1060
 CMPT1070
 CMPT1080
 CMPT1090
 CMPT1100

FUNCTION CMPT1(HOB,F,A,THETA,OMEGA,PATH,T,TPRIME,GAMYLD)
 C
 C CALCULATES F(T,P) FOR RUNGE-KUTTA INTEGRATION
 C OF PHI COMPONENT OF CCFTON CURRENT
 C
 SOLVE=TOFT(T,TPRIME,THETA,CMEGA)
 SOLVE=FOFT(SOLVE)
 SOLVE=SOLVE*(-4.608E-11)*CCFF(R,A,HOB,FATH,GAMYLD)
 CMPT1=SOLVE*SIN(THETA)*SIN(OMEGA*TPRIME)
 RETURN \$ END

C
 C
 C
 C

CMTH1010
 CMTH1020
 CMTH1030
 CMTH1040
 CMTH1050
 CMTH1060
 CMTH1070
 CMTH1080
 CMTH1090
 CMTH1100

FUNCTION CMTH1(HOB,R,A,THETA,OMEGA,PATH,T,TPRIME,GAMYLD)
 C
 C CALCULATES F(T,F) FOR RUNGE-KUTTA INTEGRATION
 C OF THETA COMPONENT OF CCFTON CURRENT
 C
 SOLVE=TOFT(T,TPRIME,THETA,CMEGA)
 SOLVE=FOFT(SOLVE)
 SOLVE=SOLVE*(-4.608E-11)*CCFF(R,A,HOB,FATH,GAMYLD)
 CMTH1=SOLVE*SIN(THETA)*COS(OMEGA*TPRIME)-1.
 RETURN \$ END

C
 C
 C
 C

RNKT1010
 RNKT1020
 RNKT1030
 RNKT1040
 RNKT1050
 RNKT1060
 RNKT1070
 RNKT1080
 RNKT1090
 RNKT1100
 RNKT1110
 RNKT1120
 RNKT1130

SUBROUTINE RNKINT (L1,E,F,T,SIGMA,COMPTJ)

C
 C
 C
 C

E(I+1) IS CALCULATED FROM E(I)
 USING THE RUNGE-KUTTA METHOD

DATA (C=3.0E8),(RMLC=12.56637E-7)
 EFUN(R,E)=- (1./R+C*FMU0*SIGMA/2.)*E-COMPTJ*C*RMU0/2.
 RK1=H*EFUN(R,E)
 RK2=H*EFUN(R+H/2.,E+RK1/2.)
 RK3=H*EFUN(R+H/2.,E+RK2/2.)
 RK4=H*EFUN(R+H,E+RK3)
 E1=E+(RK1+2.*(RK2+RK3)+RK4)/6.
 RETURN \$ END

RKCP1010
 RKCP1020
 RKCP1030
 RKCP1040
 RKCP1050
 RKCP1060
 RKCP1070
 RKCP1080

FUNCTION RKCMTN(R,THETA,CMEGA,TP,TPRIME)

C
 C
 C
 C

CALCULATES F(T) FOR RUNGE-KUTTA
 INTEGRATION OF PRIMARY ELECTRONS

SOLVE=TOFT(TP,TPRIME,THETA,CMEGA)
 RKCMTN=FCFT(SOLVE)
 RETURN \$ END

```

C
C
C
C
FUNCTION GOFR (R,A,FOP,PATH,GAMYLD)
      SOLVES VIRGIN TRANSFCRT AND USES REACTION RATE TO
      CALCULATE THE NUMBER DENSITY OF RACIAL ELECTRONS
      SOLVE=(.0226275/COS(A))*(-1.+EXP(R*COS(A)/7000.))*EXP(-HOB/7000.)
      DENOM=12.56637*R*R*PATH*1.E
      GCFR=EXP(-SOLVE)*GAMYLD/CENCM
      RETURN $ END
GCFR1010
GOFR1020
GCFR1030
GCFR1040
GOFR1050
GCFR1060
GOFR1070
GCFR1080
GOFR1090

```

```

C
C
C
C
C
FUNCTION CLIFE (R,A,HOP)
      CALCULATES COMPTON LIFETIME AT RADIUS = R
      MAX ACCEPTABLE LIFETIME = 100 SHAKES FCR
      THE KARZAS-LATTER HIGH FREQUENCY APPROX
      CLIFE=1.041667E-8*EXP((-HCE-R*COS(A))/7000.)
      IF(CLIFE.GT.1.E-6) CLIFE=(1.E-6)
      RETURN $ END
CLIF1010
CLIF1020
CLIF1030
CLIF1040
CLIF1050
CLIF1060
CLIF1070
CLIF1080
CLIF1090

```

FOFT1010
FOFT1020
FOFT1030
FOFT1040
FOFT1050
FOFT1060
FOFT1070
FOFT1080
FOFT1090

FUNCTION TOFT (T,TPRIME,THETA,OMEGA)
C
C
C
T(T) IS TIME TRANSFORMED TO KARZAS-LATTER FORM
B=0.959
FIRST=T-(1.-B*(COS(THETA)**2))*TPRIME
SECOND=B*(SIN(THETA)**2)*SIN(OMEGA*TPRIME)/OMEGA
TOFT=FIRST+SECOND
RETURN \$ END

C
C
C

FOFT1010
FOFT1020
FOFT1030
FOFT1040
FOFT1050
FOFT1060
FOFT1070
FOFT1080
FOFT1090
FOFT1100
FOFT1110

FUNCTION FOFT(T)
C
C
C
C
F(T) IS THE POMRANNING MODEL FOR TIME DEPENDENCE
OF NUCLEAR WEAPON YIELD IN RETARDED TIME
INTEGER OUT
COMMON OUT,A,B,RN,T
TSHAKE=1.E8*T
DENCY=(B+A*EXP((A+B*(TSHAKE-T)))*RN
FOFT=(A+B)*EXP(A*(TSHAKE-T))/DENCY
RETURN \$ END

C
C
C
C


```

C
C
C
SUBROUTINE ELGPLT(EFLOT,TIME,BIG)
    THE FIRST 20 SHAKES CF E(T) IS PLOTTED ON LINEAR SCALES
    DIMENSION EFLOT(192),TIME(192),E(112),T(112)
    MAG = 5 & SMALL = 0.0
    CHECK = 0.0
    DO 6 I=1,110
        E(I)=EFLOT(I) & T(I)=TIME(I)
    CCNTINUE
    CALL PLOT (0.0,-8.0,-3)
    CALL PLOT (2.0,2.0,-3)
    CALL SCALE (T,5.,110,1)
    CALL SCALE (E,5.,110,1)
    CALL LINE(T,E,110,1,0,0)
    CALL AXIS(0.,0.,13*TIME (SPACES),-13,5.,0.,T (111),T (112))
    CALL AXIS(0.,0.,12*HEFIELD (V/M),12,5.,90.,E (111),E (112))
    CALL AXIS(0.,5.,2H,2,5.,0.,T (111),T (112))
    CALL AXIS(5.,0.,2H,-2,5.,90.,E (111),E (112))
    CALL PLOT(10.0,2.0,-3)
    SMALL VALUES OF E(T) ARE CLIPPED OFF
    AND E(T) IS PLOTTED ON LOG-LOG SCALES
    DO 3 I=1,190
        IF((EFLOT(I)/BIG).LT.(10.*(-MAG)))2,3
        EFLOT(I)=BIG*(10.*(-MAG)) & CHECK=1.
    CCNTINUE
    IF(CHECK.EQ.0.) GO TO 11
    PRINT 2005
    PRINT 2006,(EFLOT(I),I=1,190)
    SMALL=BIG*(10.*(-MAG))
    PRINT 2007,SMALL,BIG
    CCNTINUE
    CALL PLOT (0.0,-8.0,-3)
    CALL PLOT (2.0,2.0,-3)
    6
    2
    3
    11
EPLT 10
EPLT 20
EPLT 30
EPLT 40
EPLT 50
EPLT 60
EPLT 70
EPLT 80
EPLT 90
EPLT 100
EPLT 110
EPLT 120
EPLT 130
EPLT 140
EPLT 150
EPLT 160
EPLT 170
EPLT 180
EPLT 190
EPLT 200
EPLT 210
EPLT 220
EPLT 230
EPLT 240
EPLT 250
EPLT 260
EPLT 270
EPLT 280
EPLT 290
EPLT 300
EPLT 310
EPLT 320
EPLT 330
EPLT 340
EPLT 350
EPLT 360

```

```

CALL LGSCAL (TIME,5.0,190)
CALL LGSCAL (EPLT,5.0,190)
CALL LGLINE (TIME,EPLT,190,0,0,0)
CALL LGAXIS(0.,0.,13*TIME (SPAKES),-13,5.,0.,TIME(191),TIME(192)) EPLT 370
CALL LGAXIS(0.,0.,12*HEFIELD (V/M),12,5.,90.,EPLT(191),EPLT(192)) EPLT 380
CALL LGAXIS(0.,5.,2H ,2,5.,0.,TIME(191),TIME(192)) EPLT 390
CALL LGAXIS(5.,0.,2H ,2,5.,90.,EPLT(191),EPLT(192)) EPLT 400
CALL PLOTE
RETURN
2005 FCRMAT("1 * * WARNING: FLOT OF E(T) HAS BEEN CLIPPED * * *") EPLT 460
2006 FCRMAT("/5X,"CLIPPED E(T) IS"//19(10(3X,1PE10.3)/)) EPLT 470
2007 FCRMAT("//" MINIMUM E(T) IS",1PE10.3/" MAXIMUM E(T) IS",1PE10.3EPLT 480
1) EPLT 490
END EPLT 500

```

Vita

Terry C. Chapman was born on 21 August 1943 in Vancouver, Washington. He graduated from high school in Manitou Springs, Colorado in 1961. He attended the University of Colorado in Boulder where he was elected to Tau Beta Pi, Engineering Honor Society and Sigma Pi Sigma, Physics Honor Society. He received the degree Bachelor of Science, Engineering Physics and a commission in the U. S. Air Force from the University of Colorado in 1969. After attending communications training, he was assigned to Kelly AFB, Texas as a communications operations officer in 1970. He entered the Air Force Institute of Technology in 1972.

Permanent Address: P.O. Box 1144

Manitou Springs, Colorado 80829

This thesis was typed by Ladonna Stitzel.